



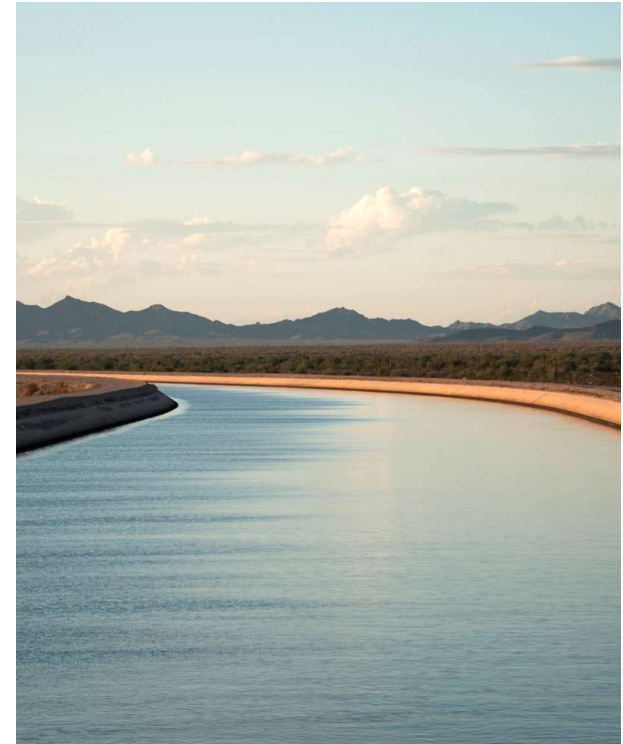
# The CAP System

Rudy Fischer, CAWCD Board Member

Andrew Tatlow, Water Control Supervisor

# The CAP System

- System facts
- Water deliveries



# System Facts

- 336-mile-long aqueduct
  - 14 pumping plants lift water nearly 3,000 feet
  - 10 siphons, 4 tunnels
- Begins at Lake Havasu and ends just south of Tucson
- Includes storage reservoir Lake Pleasant



# System Facts - Operations

Everything is operated and monitored from our **Control Center** at Headquarters in Phoenix.



Tucson Field Office



# System Facts - Pumping Plants

- 14 pumping plants lift water to flow by gravity to the next plant
- Lift at each plant varies: 67 to 810 feet
- Mark Wilmer Pumping Plant at Lake Havasu (here), the first plant in the system, lifts water more than 800 vertical feet





# System Facts - Tunnels

- Four tunnels move water through mountainous terrain
- Burnt Mountain Tunnel (here) in Maricopa County:
  - 60 miles west of Phoenix
  - Diameter: 19.5 feet
  - Length: .6 miles long



# System Facts - Turnouts

- More than 50 throughout CAP system
- Help deliver raw Colorado River water, typically to more than 60 water users, including municipalities, agricultural users and tribal communities



# System Facts – New Waddell Dam: Lake Pleasant

- Earthen-fill dam nearly 5,000 feet long
- Forms CAP's storage reservoir, Lake Pleasant
- Lake Pleasant stores more than 800,000 acre-feet of water and is a recreational destination for more than 750,000 people annually





# System Facts – Recharge Projects

- Long-established, effective water management tool
- Allows renewable surface water supplies to be stored underground now for recovery later during periods of reduced water supply
- CAP maintains 6 recharge projects to store Colorado River



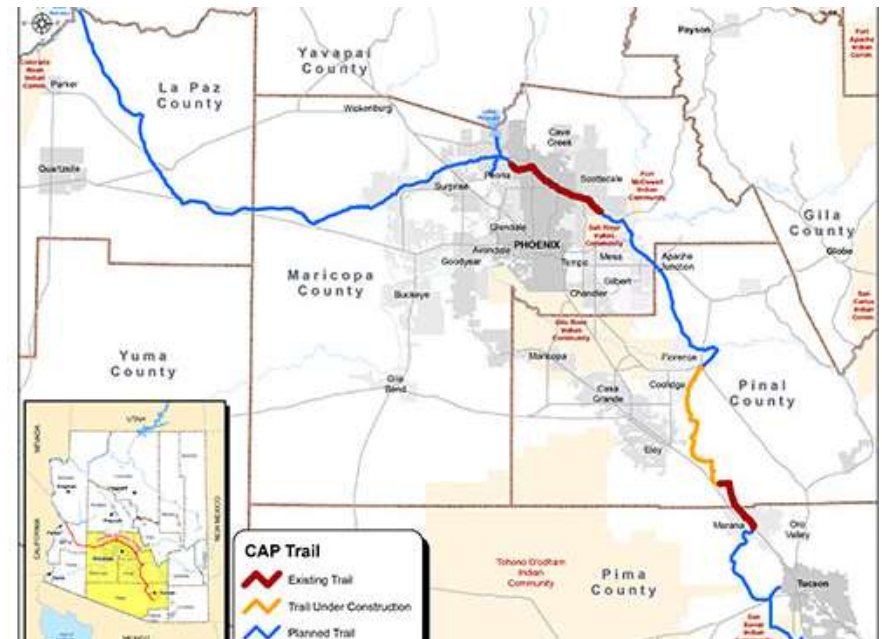
# System Facts - Wildlife Crossings

- Constructed to maintain wildlife migration corridors
- Wildlife watering tanks were installed outside CAP's security fence to ensure wildlife have access to fresh water



# System Facts - CAP Trail

- Long distance, non-motorized, multiuse recreational trail corridor
- Runs along the CAP canal traversing Maricopa, Pinal and Pima counties



# CAP Service Area

- 3 counties – Maricopa, Pinal and Pima
- Serves region where 80% of the state's population resides, with more than 6 million people and 12 tribes
- Supply allocated by contract: 46% to tribes and 54% municipal





# The CAP System: Key Take-Aways

- The CAP System is 336 miles long from Lake Havasu to Tucson
- The system includes 14 pumping plants that lift water nearly 3,000 feet
- Lake Pleasant is CAP's storage reservoir
- CAP stores Colorado River water underground in recharge projects
- CAP's three customer types are: Municipal/Industrial, Tribal and Agricultural





# Thank you!

Email Questions to:  
**CAPUniversity@cap-az.com**

Keep in touch by subscribing at [www.knowyourwaternews.com](http://www.knowyourwaternews.com) and by following us on Facebook, Twitter, LinkedIn and Instagram!