



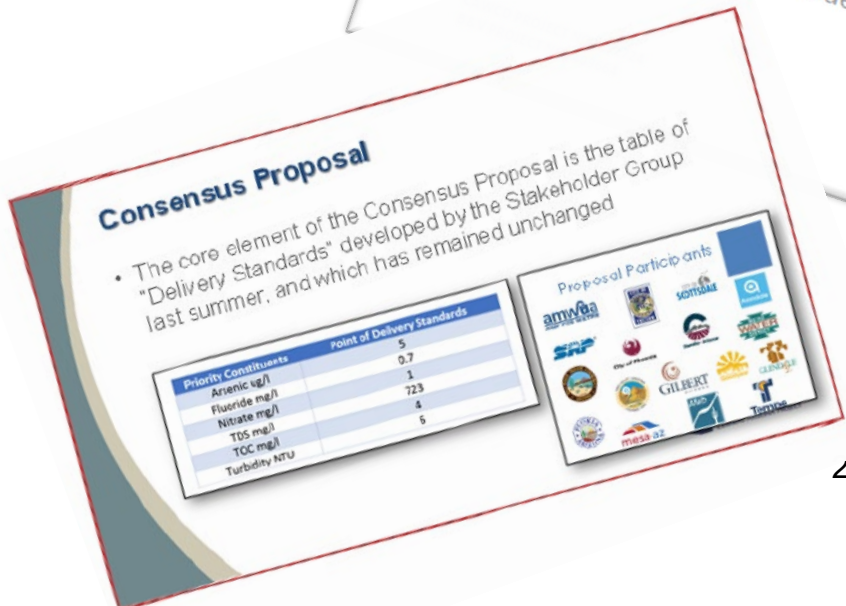
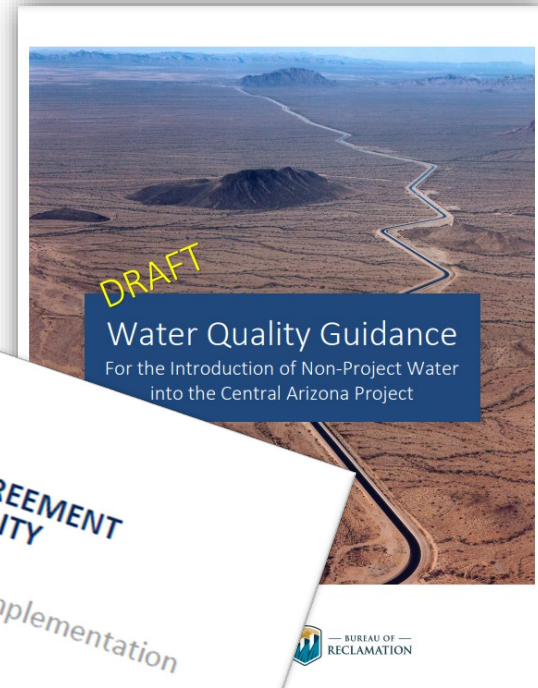
Potential new supplies and water quality

Terry Goddard, CAWCD Board President

Phillip Pagels, Water Transmission Supervisor

New Supplies and Water Quality

- Wheeled Water (Non-Project Water)
- New Supplies
- Water Quality Guidance Document
- Water Quality Modeling
- NEPA



New Supplies and Water Quality

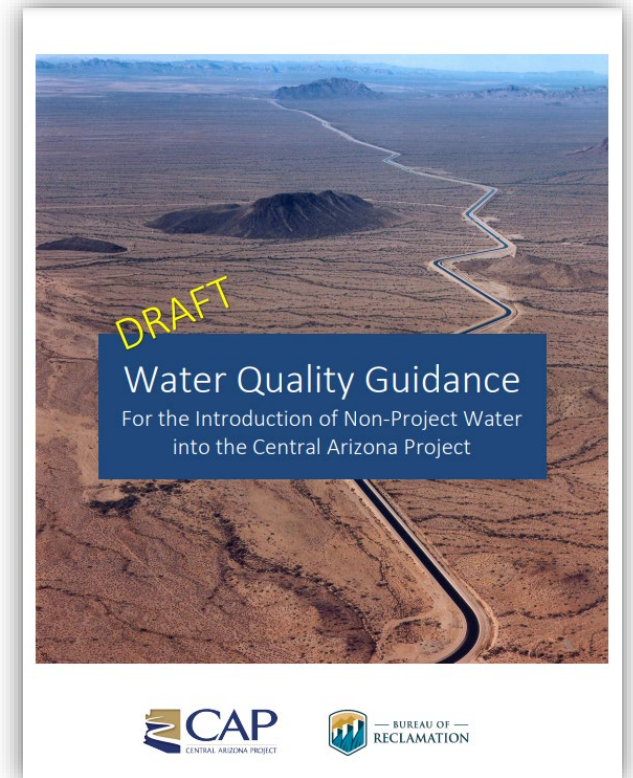
- CAP System Use Agreement
 - Signed by CAP and Reclamation (2017)
- Board's Water Quality Task Force
 - Consensus Proposal (2018)
- Water Quality Guidance (2021)
- First wheeled water delivered
 - GSC Farms to Queen Creek (Colorado River transfer 2023)



SUA signing, February 2017

New Supplies and Water Quality

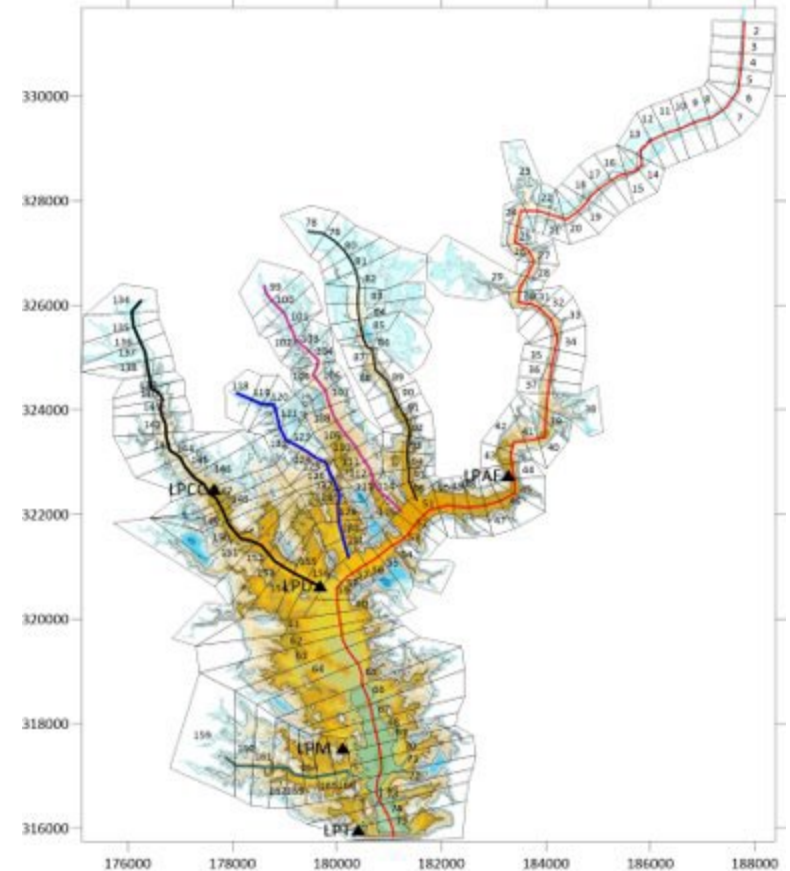
- Water Quality Guidance
 - *“Intended to provide assistance to both those seeking to introduce Non-Project Water to the CAP System, and those reviewing such proposals in the course of administering the CAP System and related contracts”*
 - Includes elements of the Consensus Proposal
 - Outlines modeling and enforcement criteria



Seasholes CAWCD Board Meeting 03.02.23

New Supplies and Water Quality

- Water Quality Modeling
 - Develop System-wide model capability of simulating the individual and cumulative water quality effects of introducing Non-Project Water in the CAP System.
 - Model should demonstrate compliance with the Delivery Standards (Appendix A, WQGD)



New Supplies and Water Quality

- Water Quality Modeling
 - CE-QUAL-W2
 - Black & Veatch customized for the CAP System
 - Calibrated, peer-reviewed model that is ready for use
 - Continuous improvements



New Supplies and Water Quality

- Wheeled Water
 - Imported Ground Water



Seasholes CAWCD Board Meeting 03.02.23

New Supplies and Water Quality

- Wheeled Water
 - Surface Water



05/23/2023 Water Committee Presentation, C.McJunkin

New Supplies and Water Quality

- Wheeled Water
 - Colorado River Transfer



DRAFT Environmental Assessment

GSC Farm – Queen Creek Water Transfer Project, Arizona
Interior Region 8: Lower Colorado Basin



U.S. Department of the Interior
Bureau of Reclamation
Interior Region 8: Lower Colorado Basin
Phoenix Area Office
Glendale, Arizona

March 2022

2/15/2024



New Supplies and Water Quality

- National Environmental Policy Act (NEPA)
 - Required for Wheeling
 - Conducted by Reclamation
 - Allows for public comment
 - New supplies are waiting Reclamation adoption of the WQGD before they can proceed with their NEPA review.
 - Queen Creek Transfer water quality standards do not apply as it's Colorado River Water



Key Takeaways

- Framework in place for wheeling water in the CAP System
- Wheeled water may come from ground water, source water and Colorado River water transfers
- Wheeled water will need to meet prescribed concentrations both prior to introduction and when modeled in the CAP System