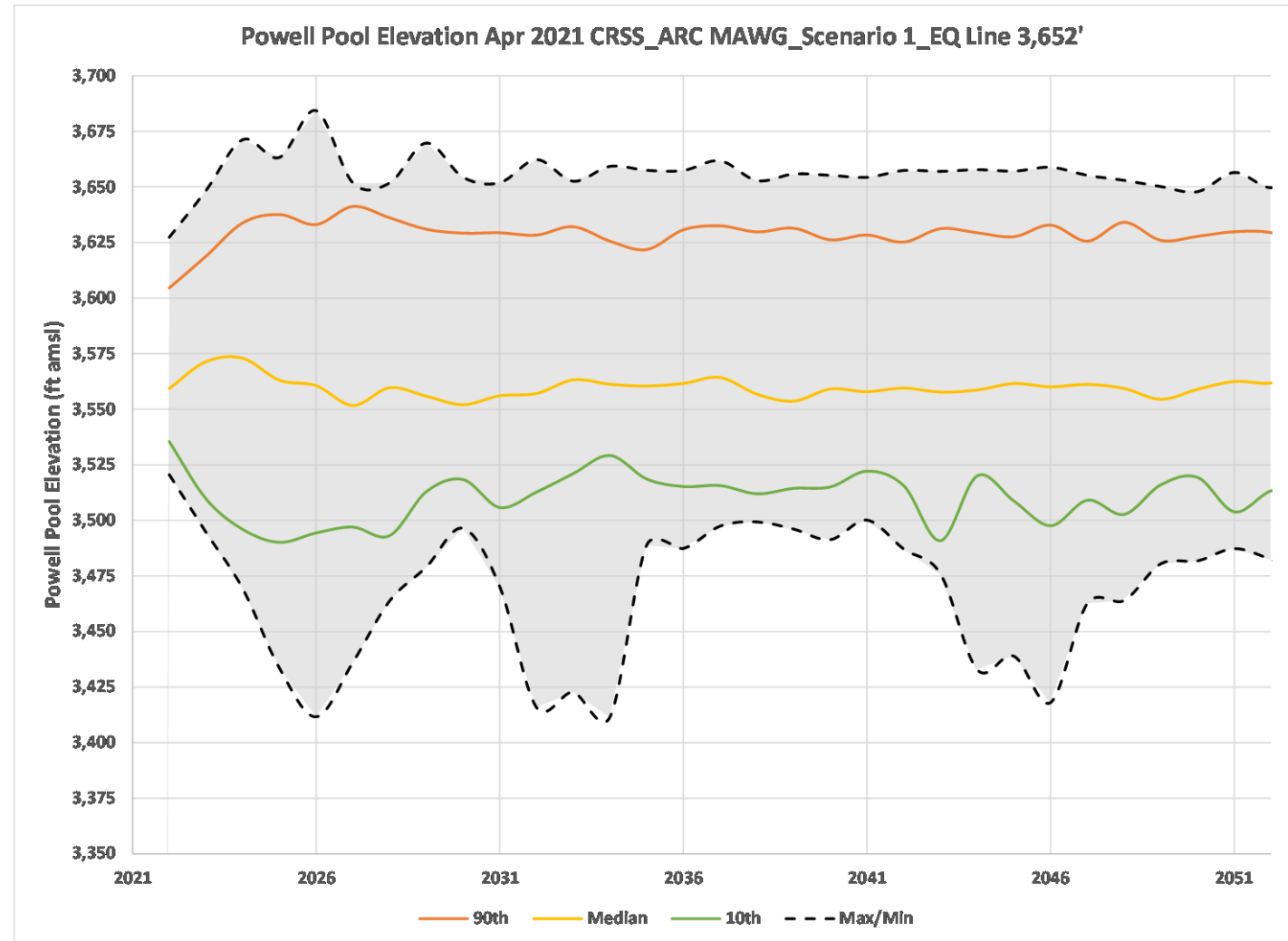


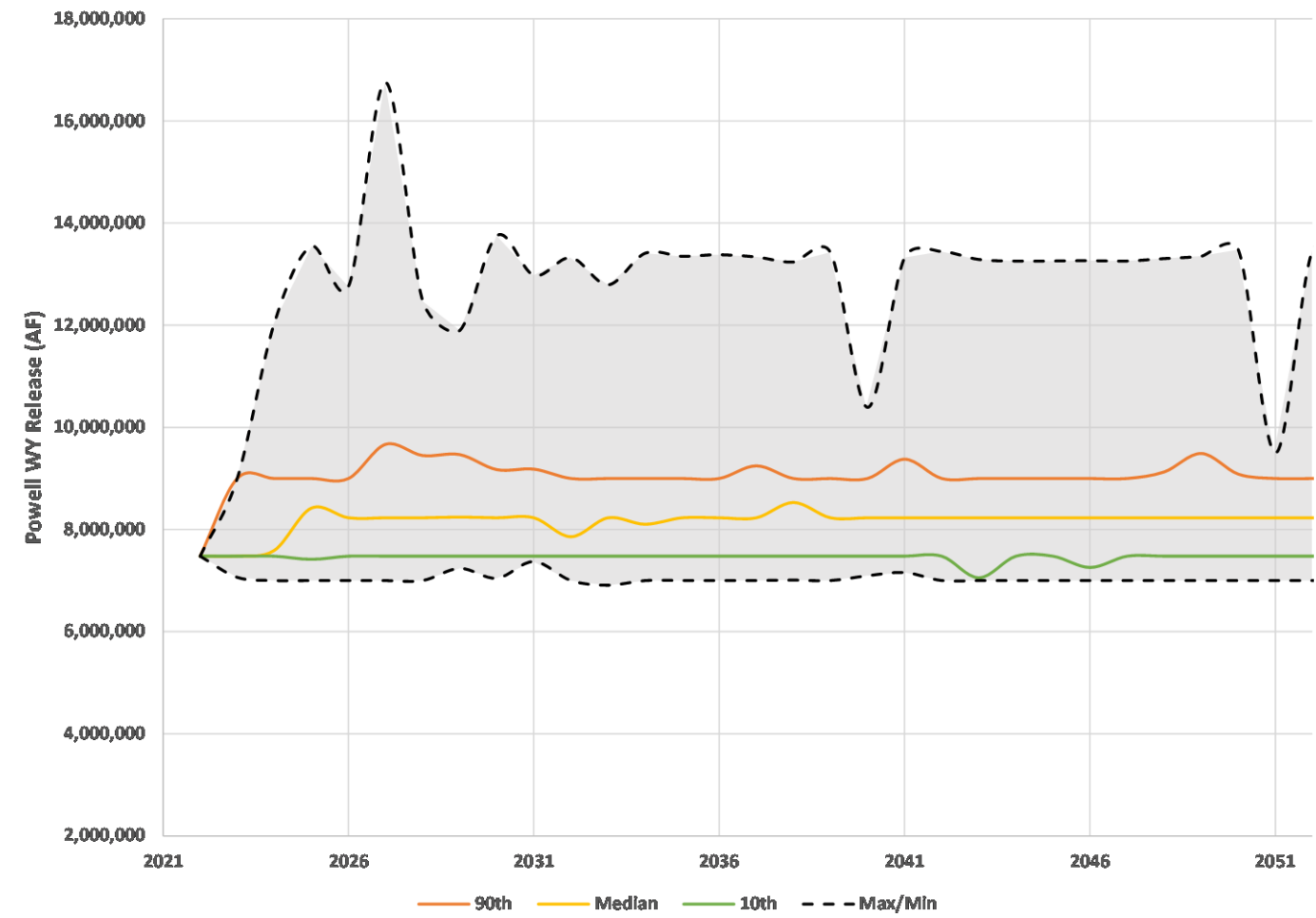
# Scenario 1





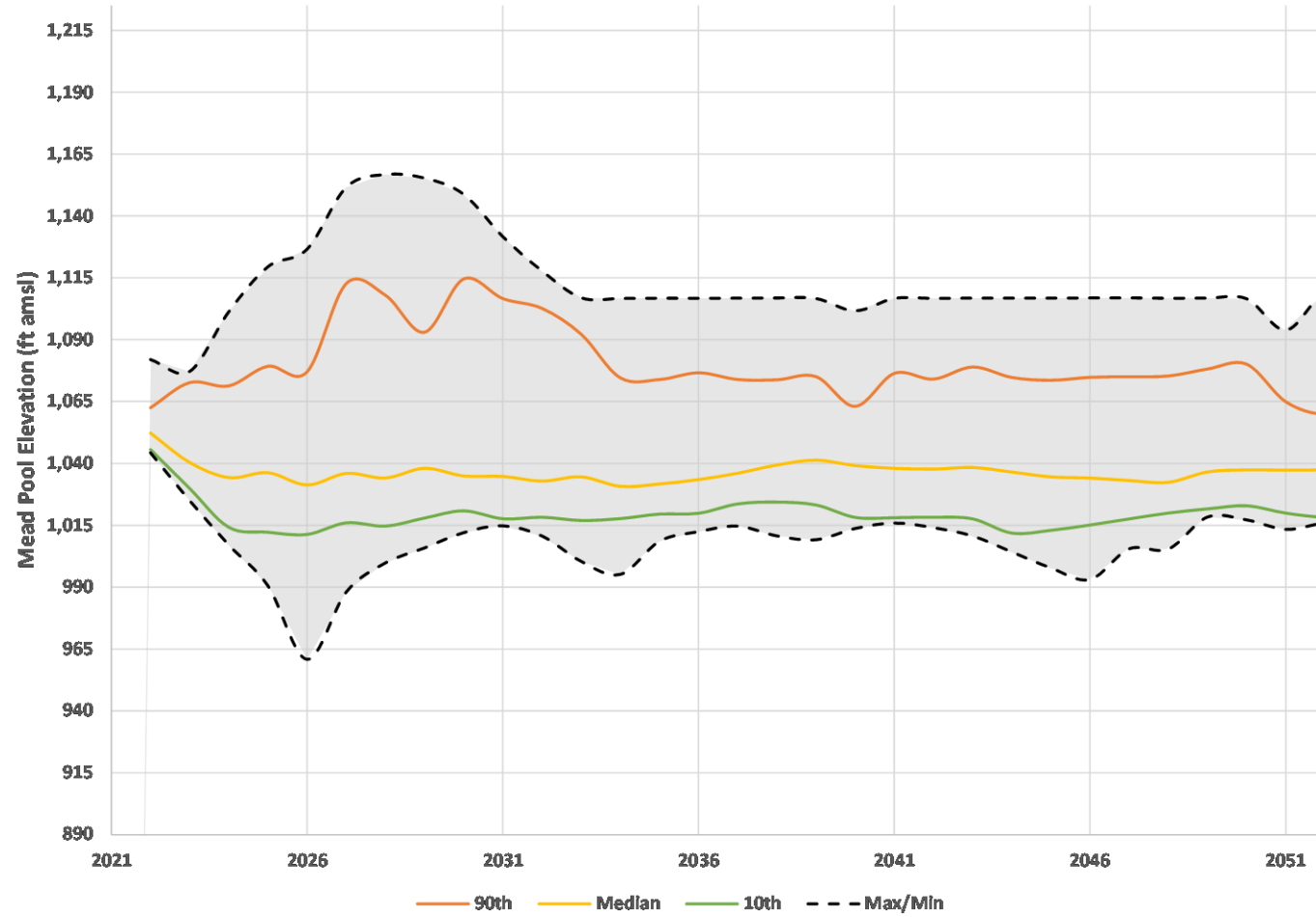
ARIZONA  
RECONSULTATION  
COMMITTEE

Powell WY Release Apr 2021 CRSS\_ARC MAWG\_Scenario 1\_EQ Line 3,652'

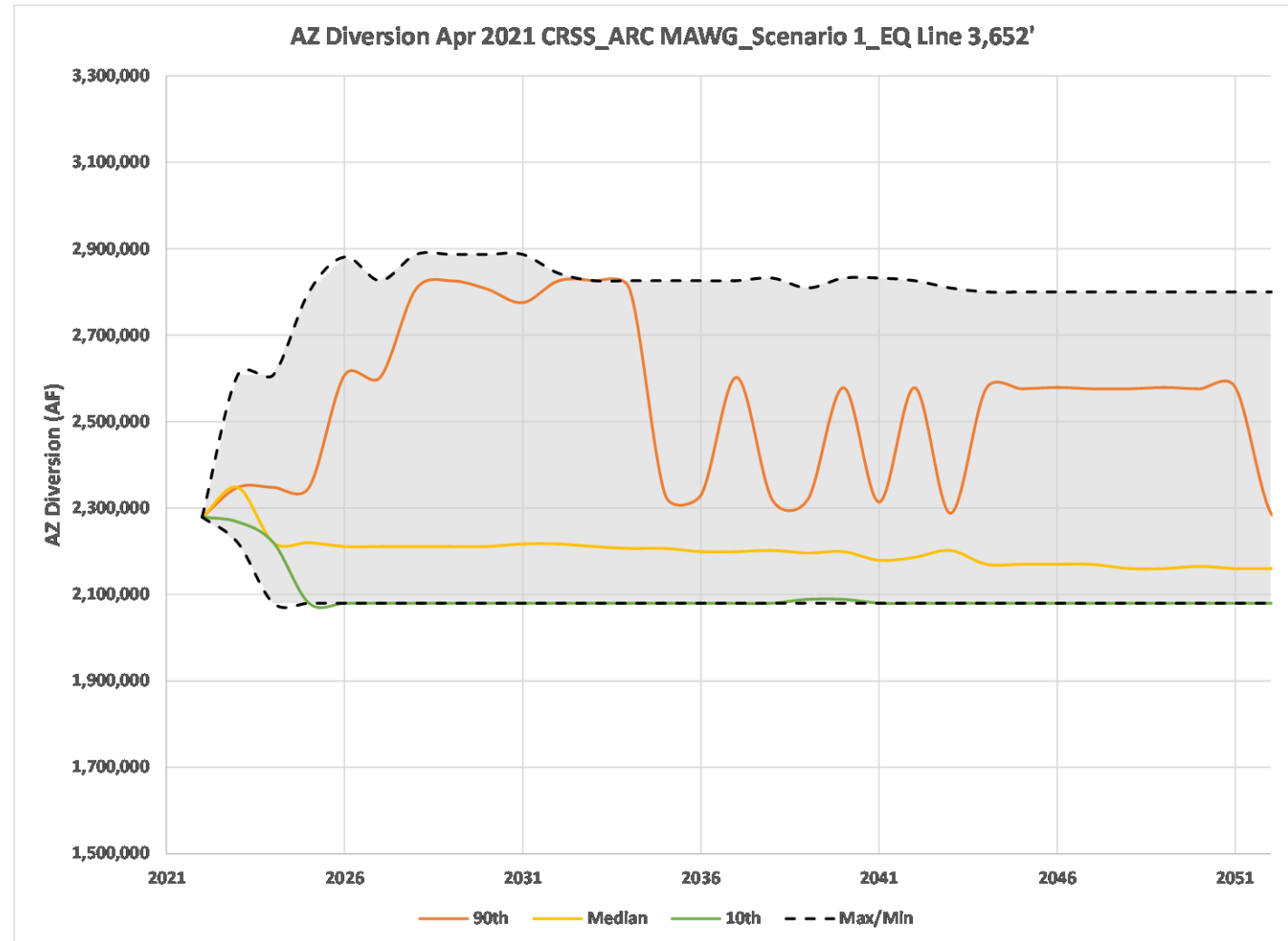


ARIZONA  
RECONSULTATION  
COMMITTEE

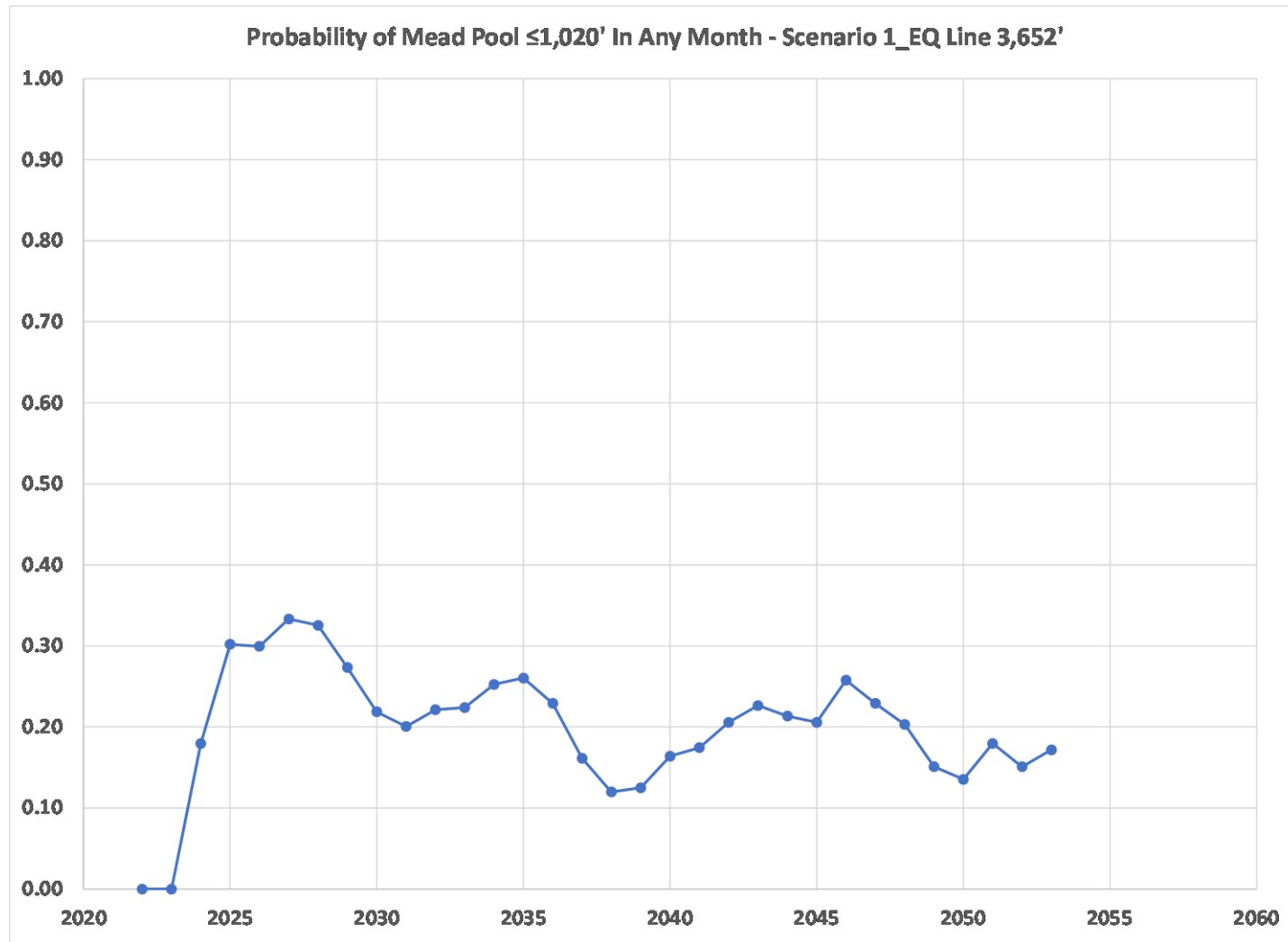
Mead Pool Elevation Apr 2021 CRSS\_ARC MAWG\_Scenario 1\_EQ Line 3,652'



ARIZONA  
RECONSULTATION  
COMMITTEE



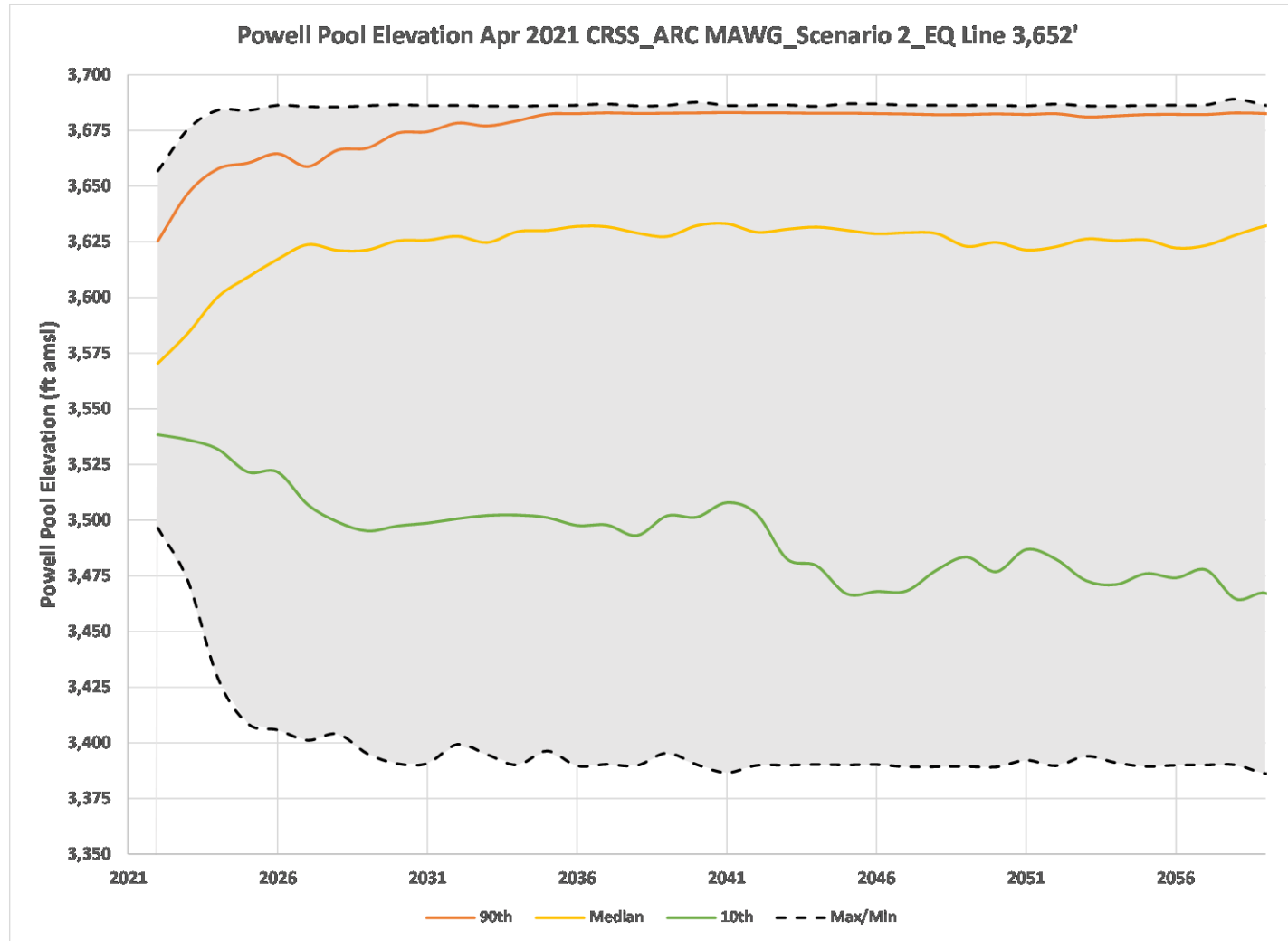
ARIZONA  
RECONSULTATION  
COMMITTEE



ARIZONA  
RECONSULTATION  
COMMITTEE

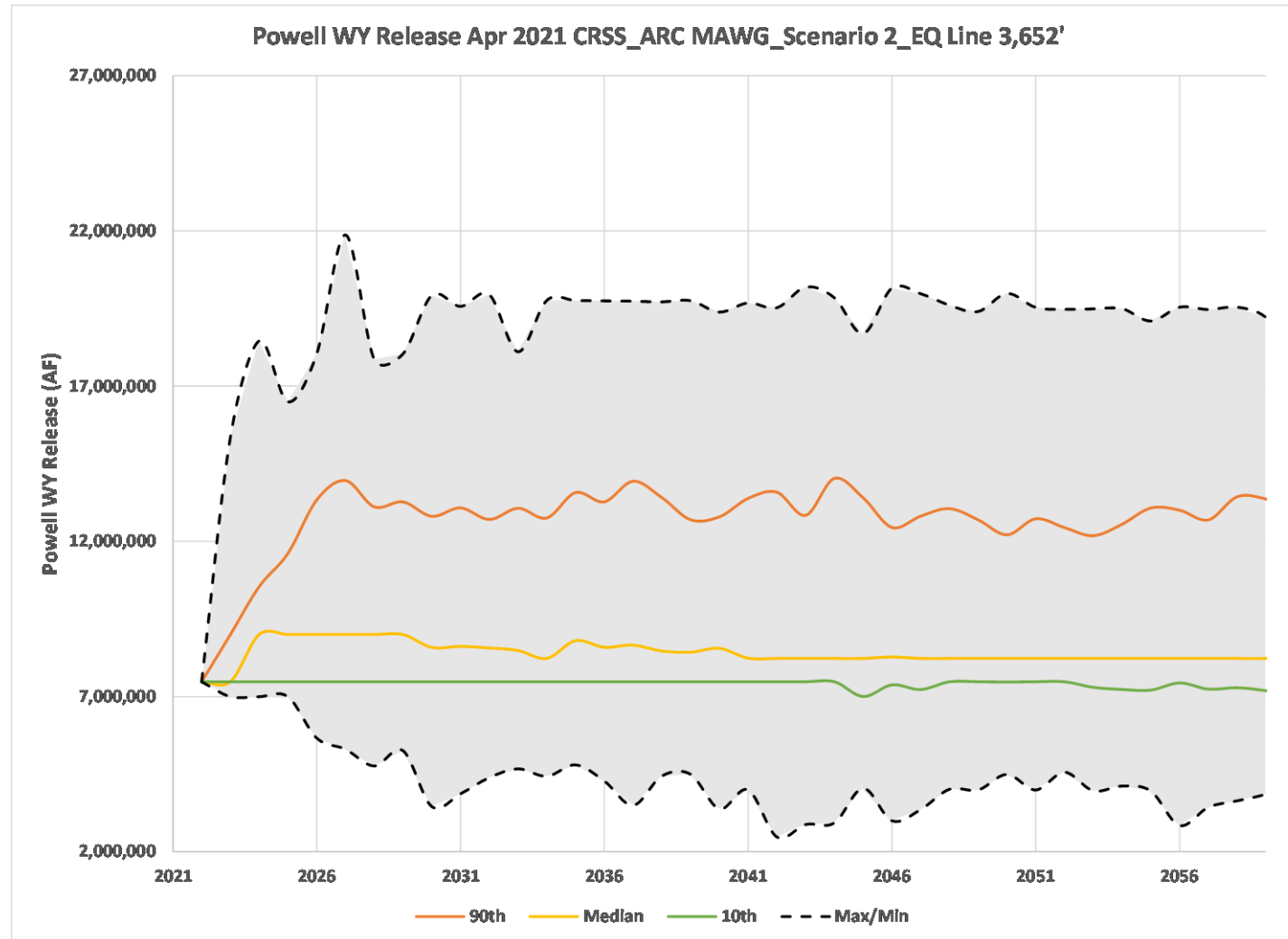
# Scenario 2



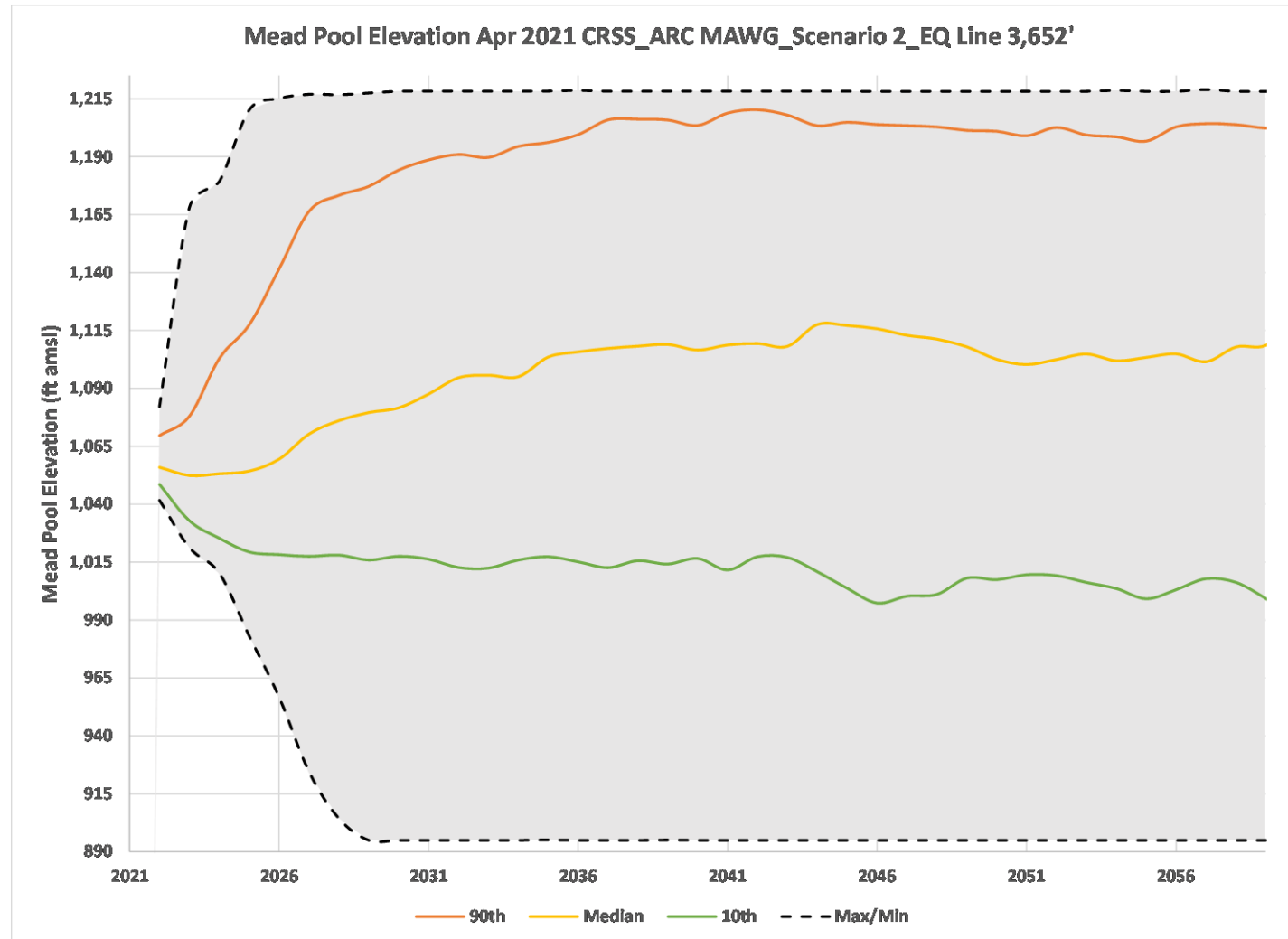


ARIZONA  
RECONSULTATION  
COMMITTEE

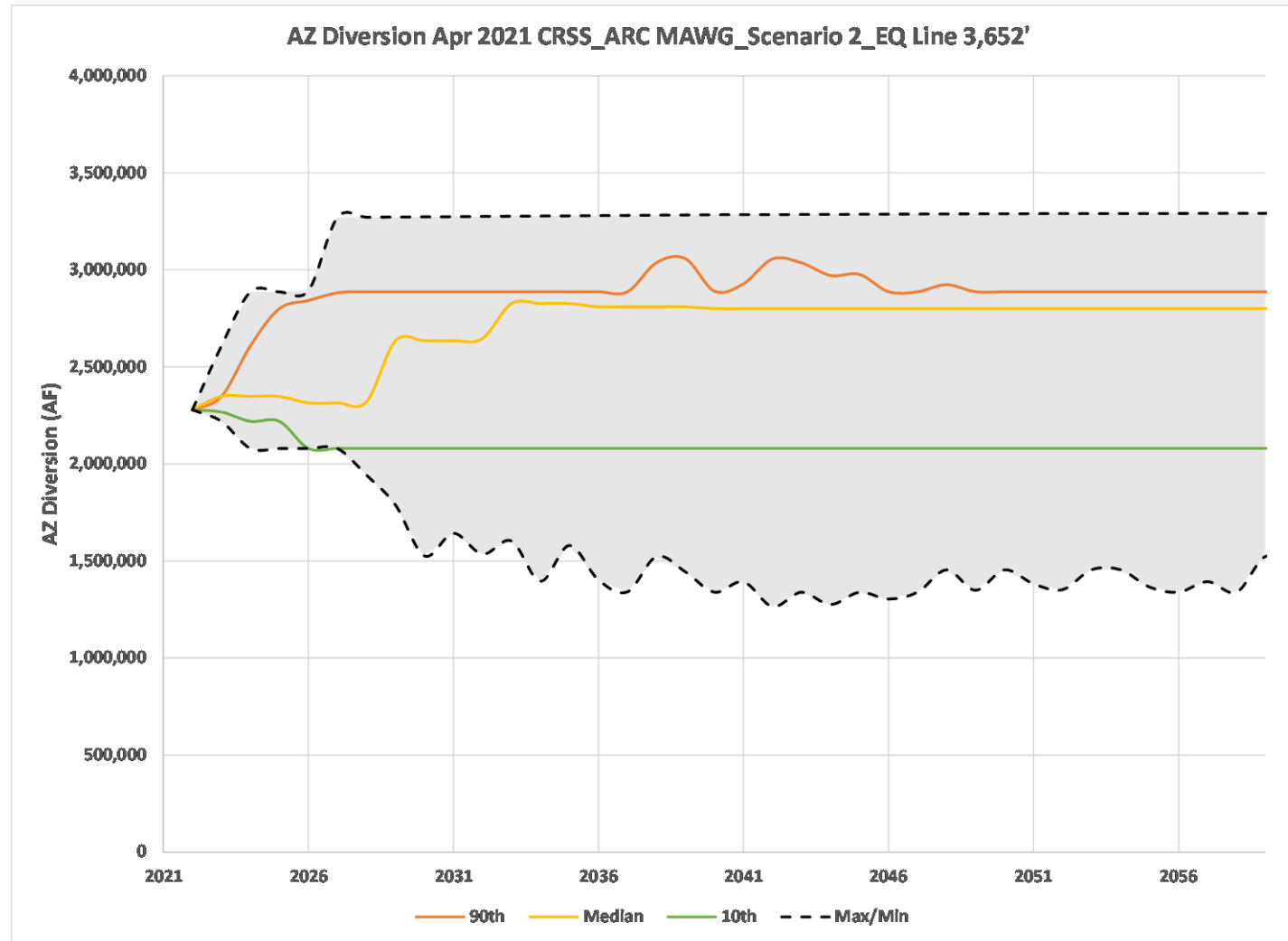




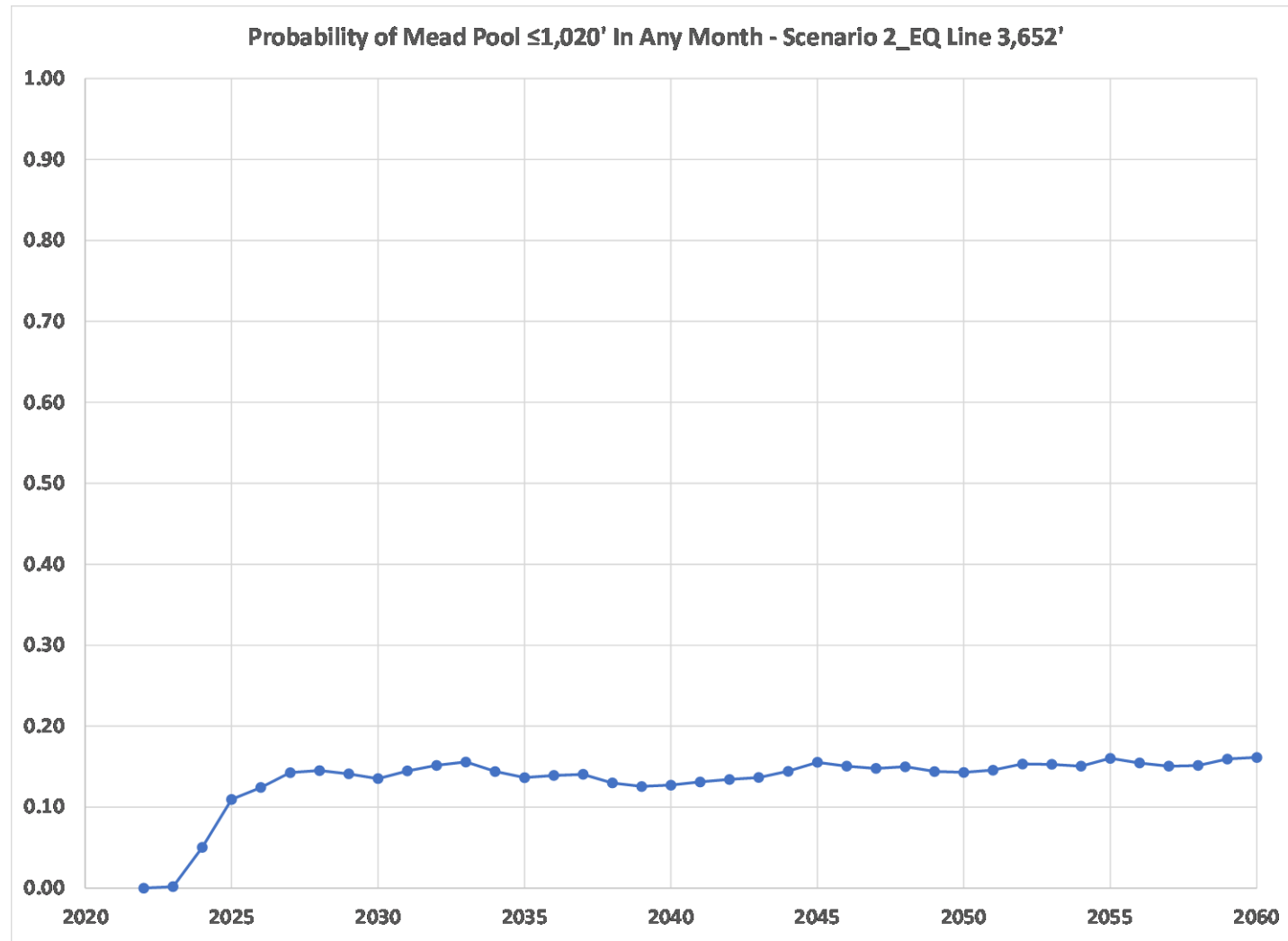
ARIZONA  
RECONSULTATION  
COMMITTEE



ARIZONA  
RECONSULTATION  
COMMITTEE



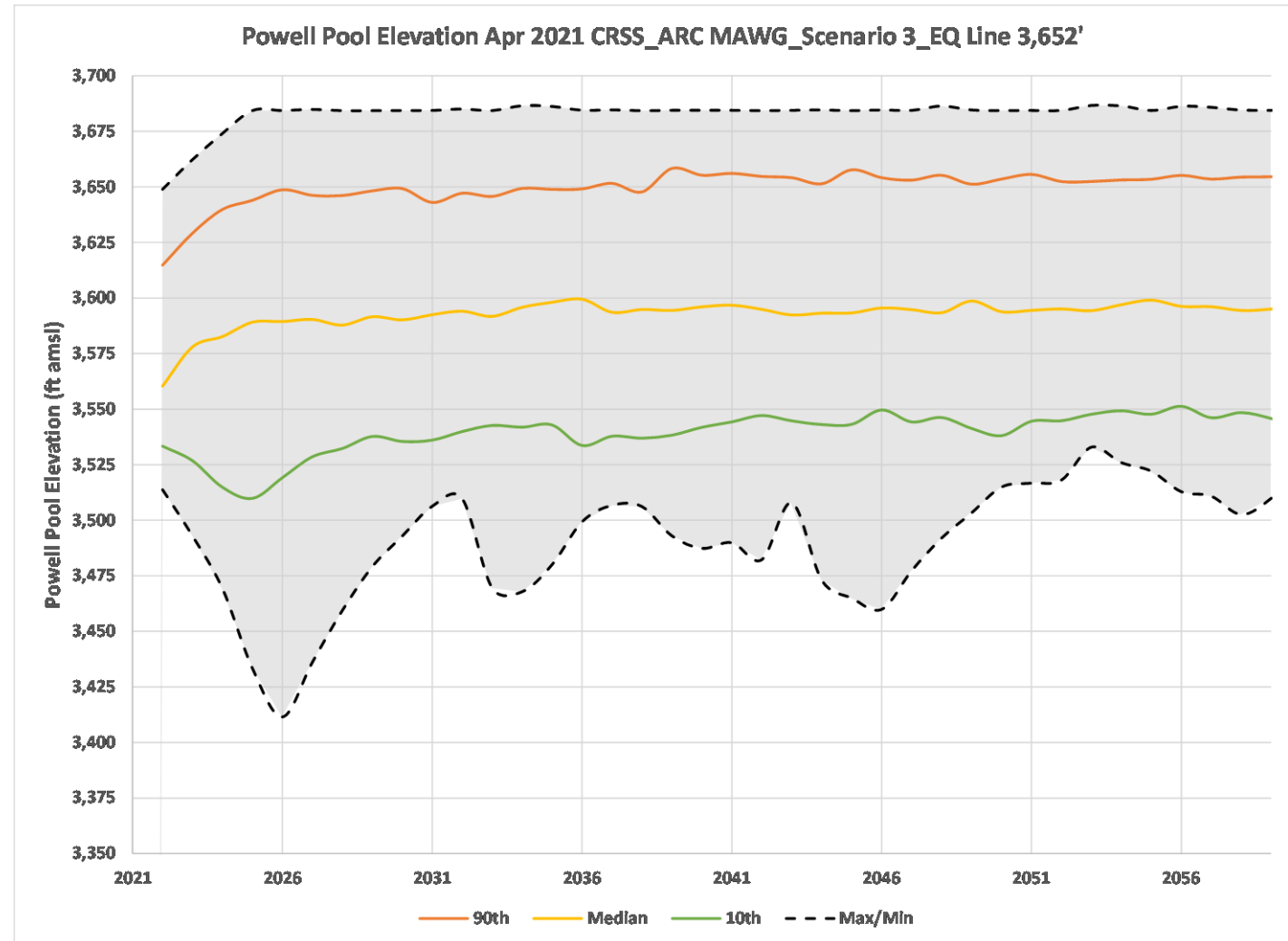
ARIZONA  
RECONSULTATION  
COMMITTEE



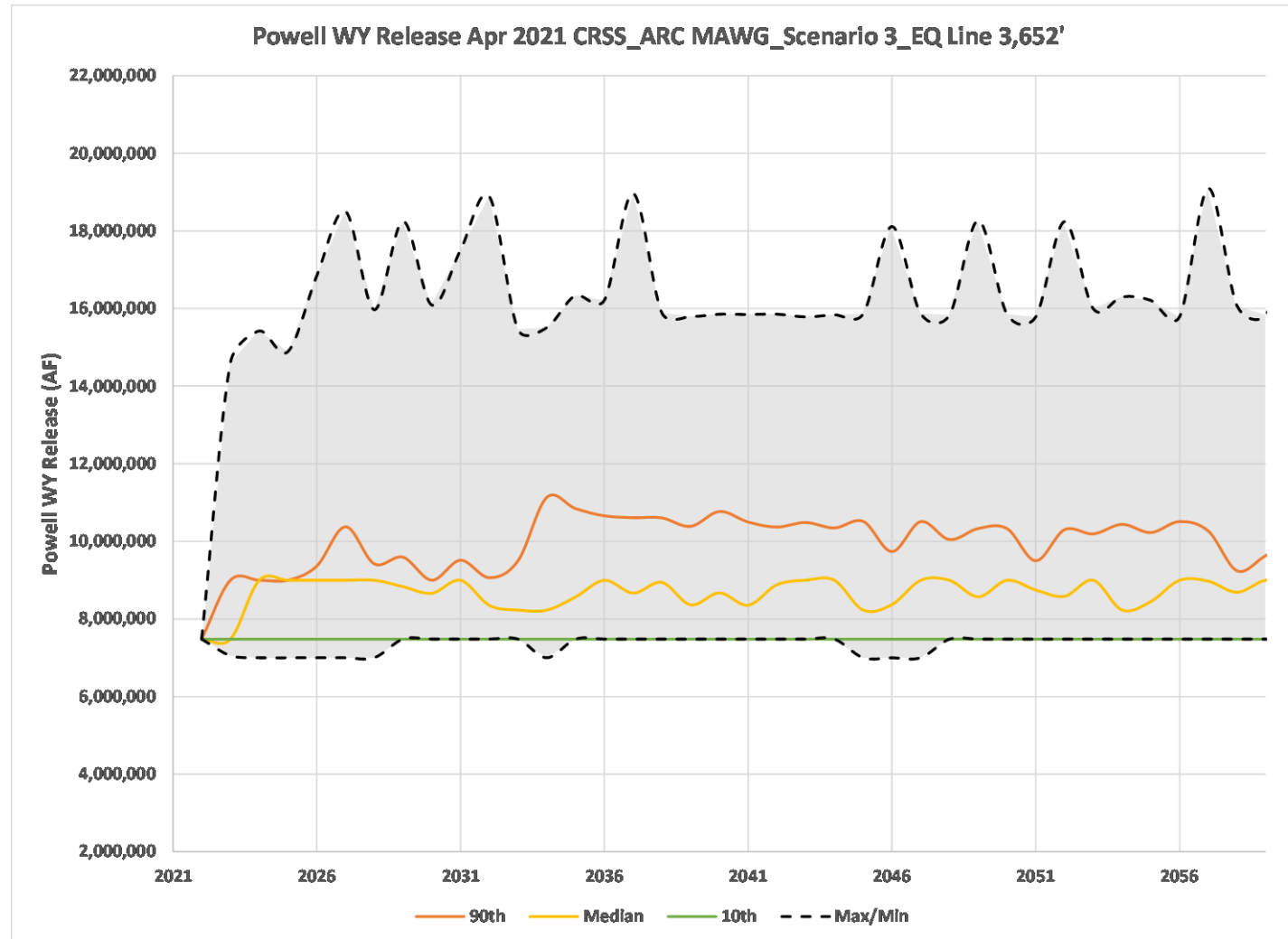
ARIZONA  
RECONSULTATION  
COMMITTEE

# Scenario 3

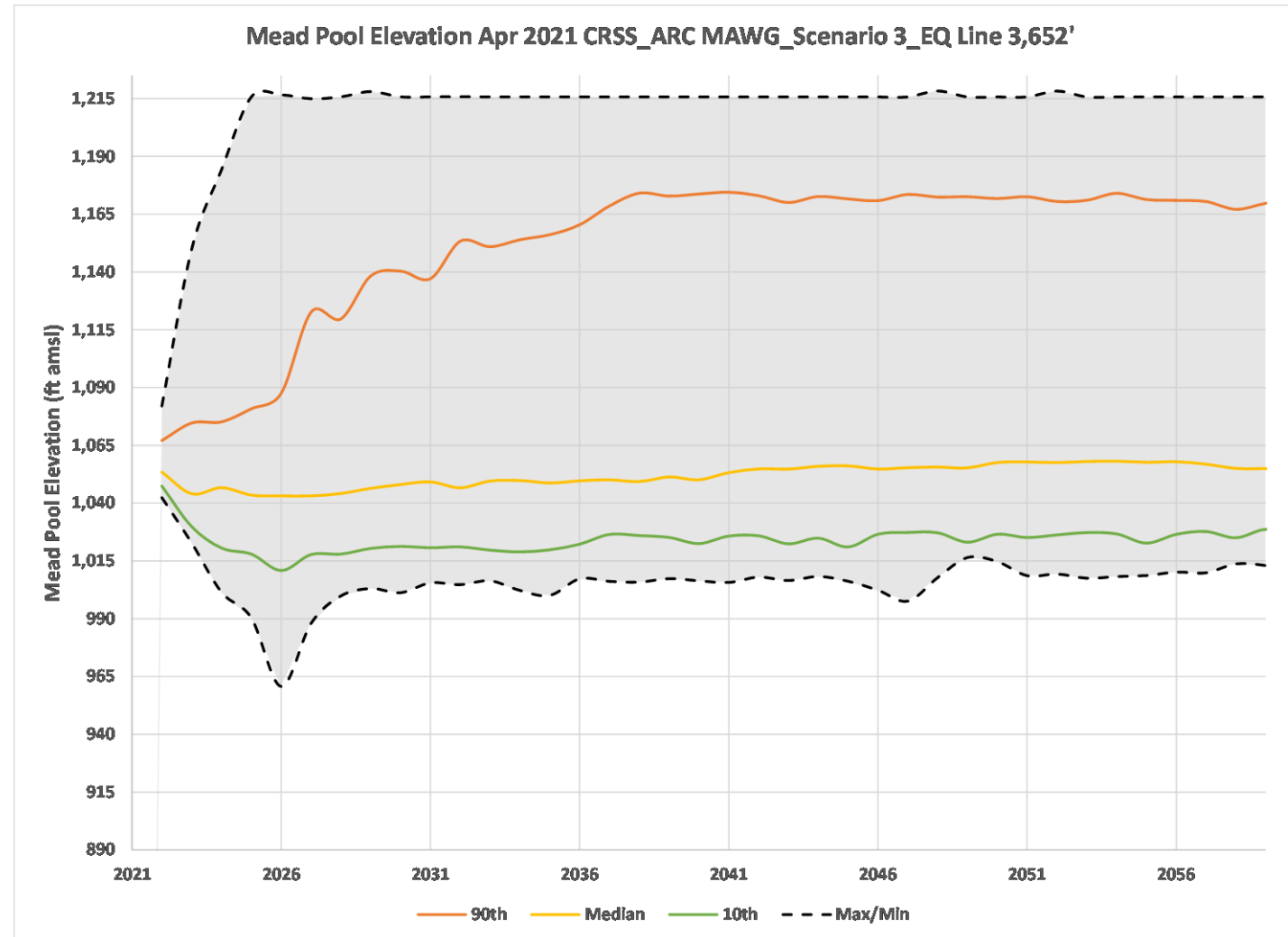




ARIZONA  
RECONSULTATION  
COMMITTEE

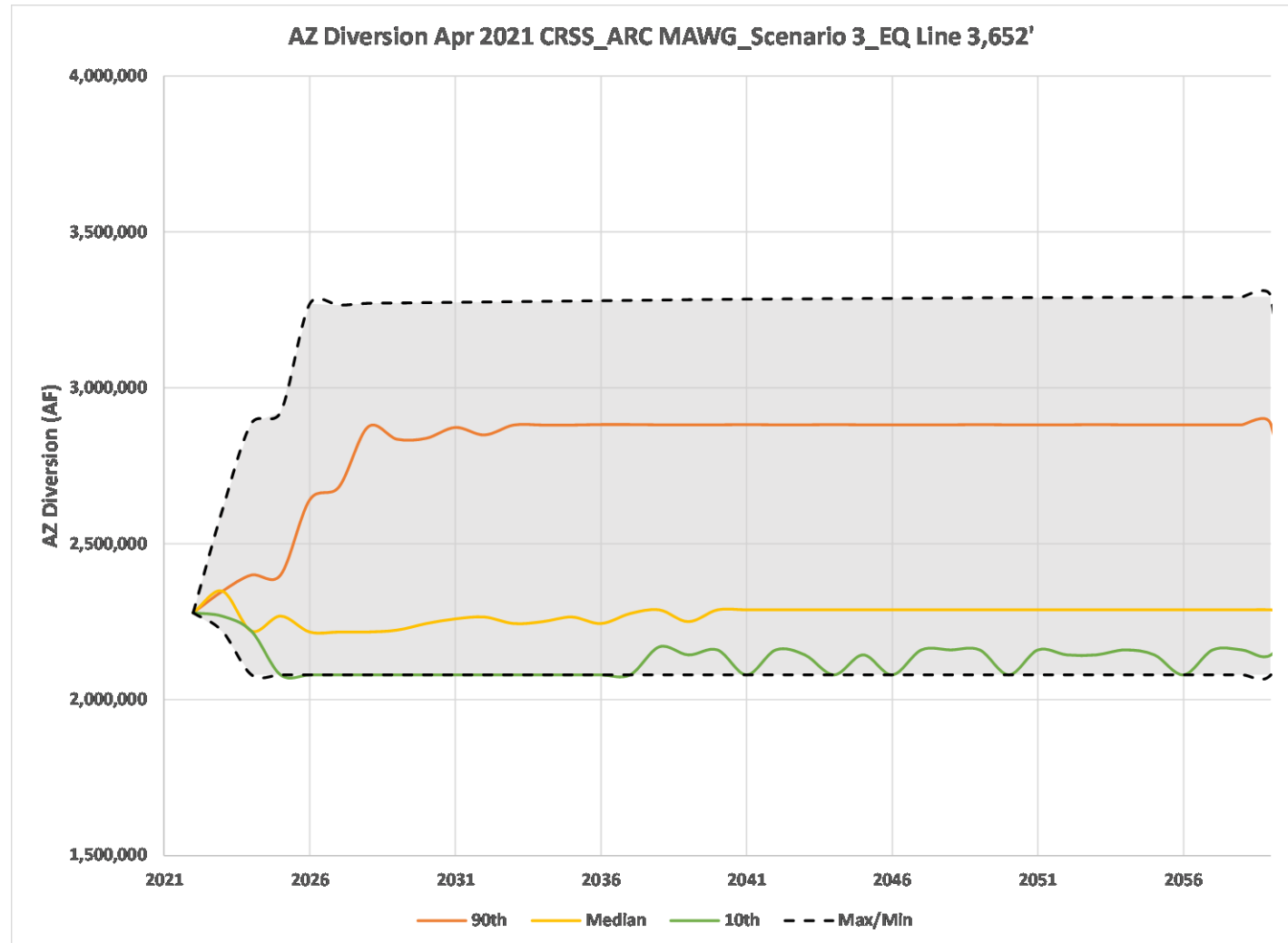


ARIZONA  
RECONSULTATION  
COMMITTEE



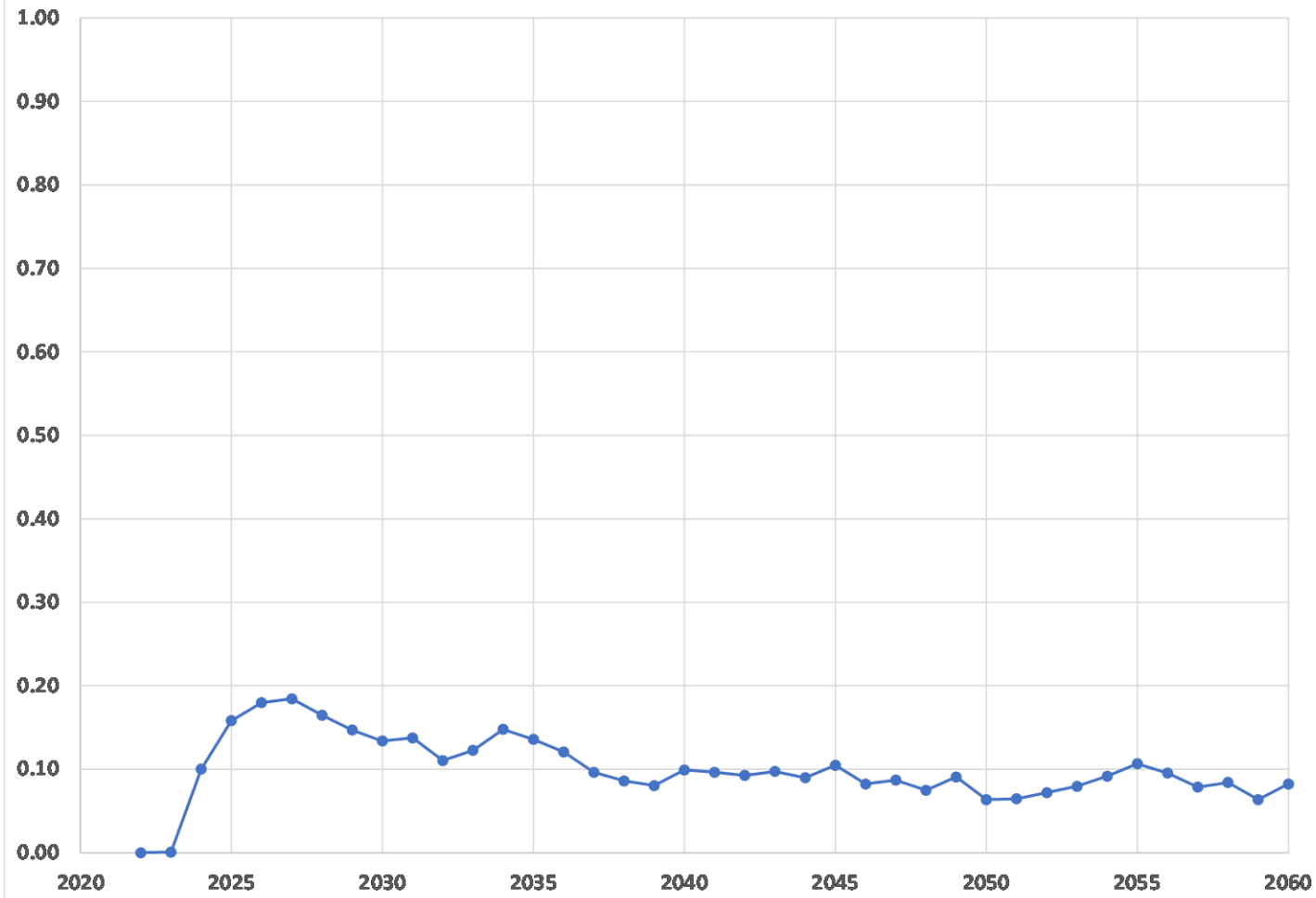
ARIZONA  
RECONSULTATION  
COMMITTEE





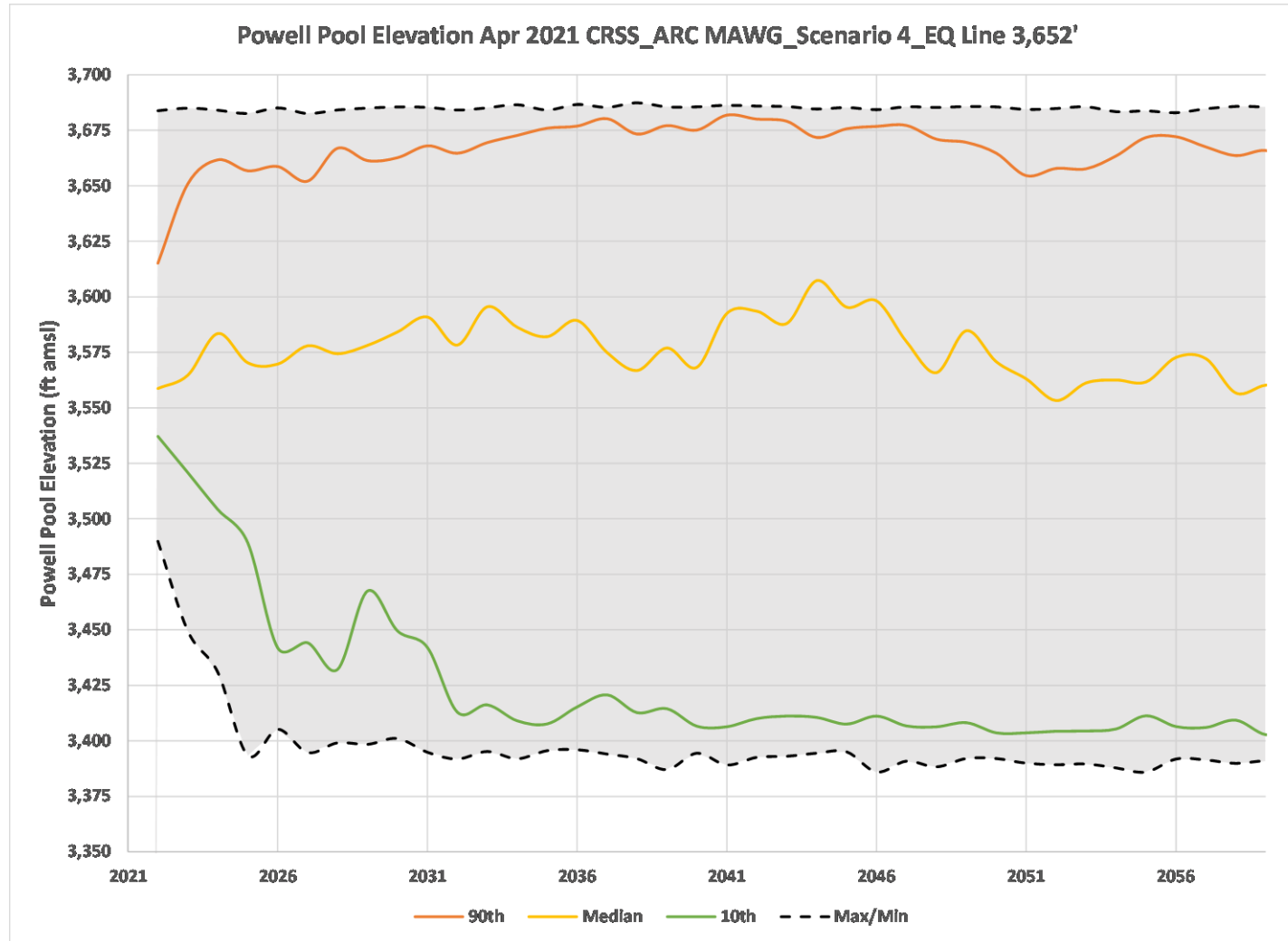
ARIZONA  
RECONSULTATION  
COMMITTEE

Probability of Mead Pool  $\leq 1,020'$  In Any Month - Scenario 3\_EQ Line 3,652'

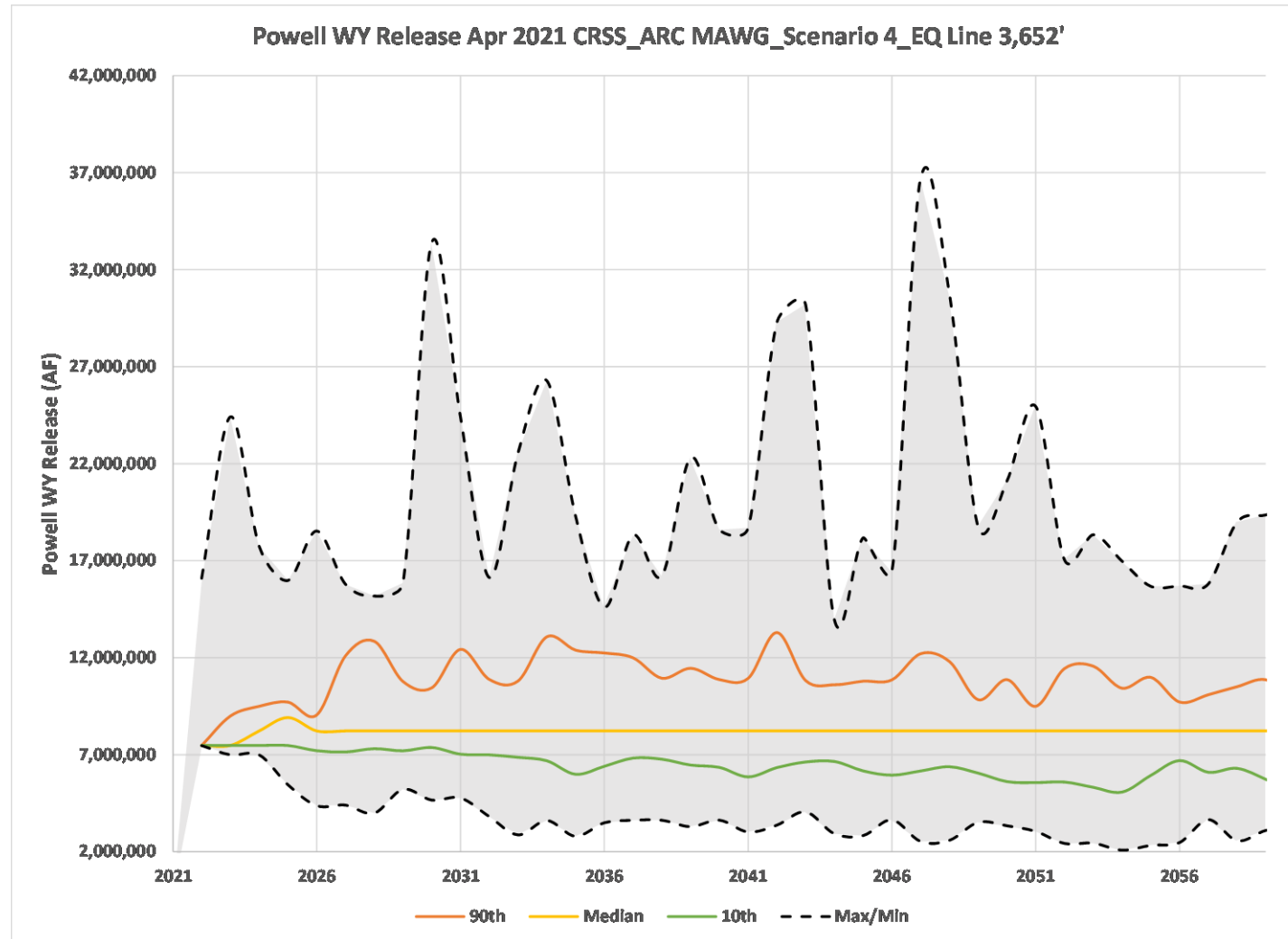


ARIZONA  
RECONSULTATION  
COMMITTEE

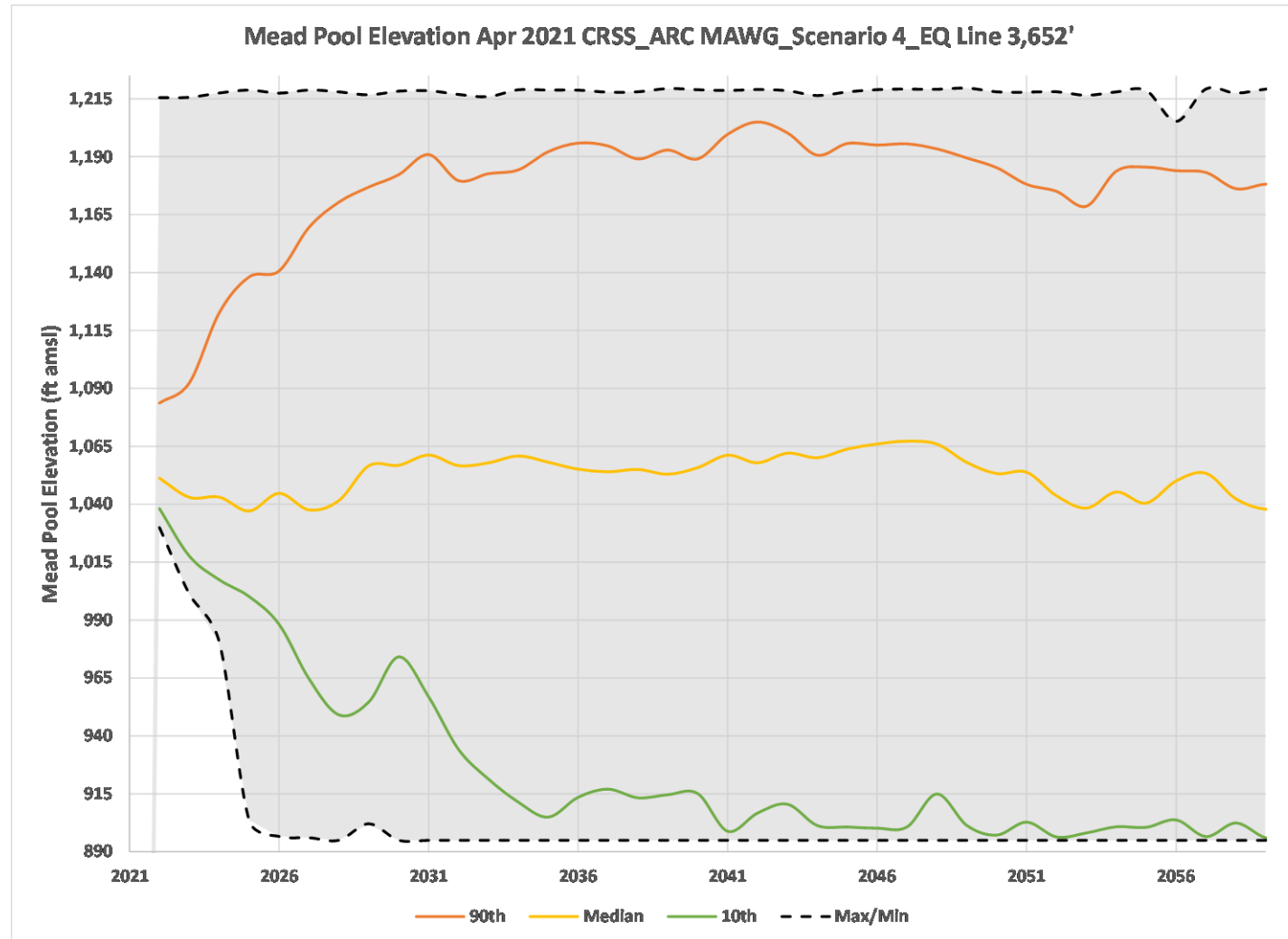
# Scenario 4



ARIZONA  
RECONSULTATION  
COMMITTEE

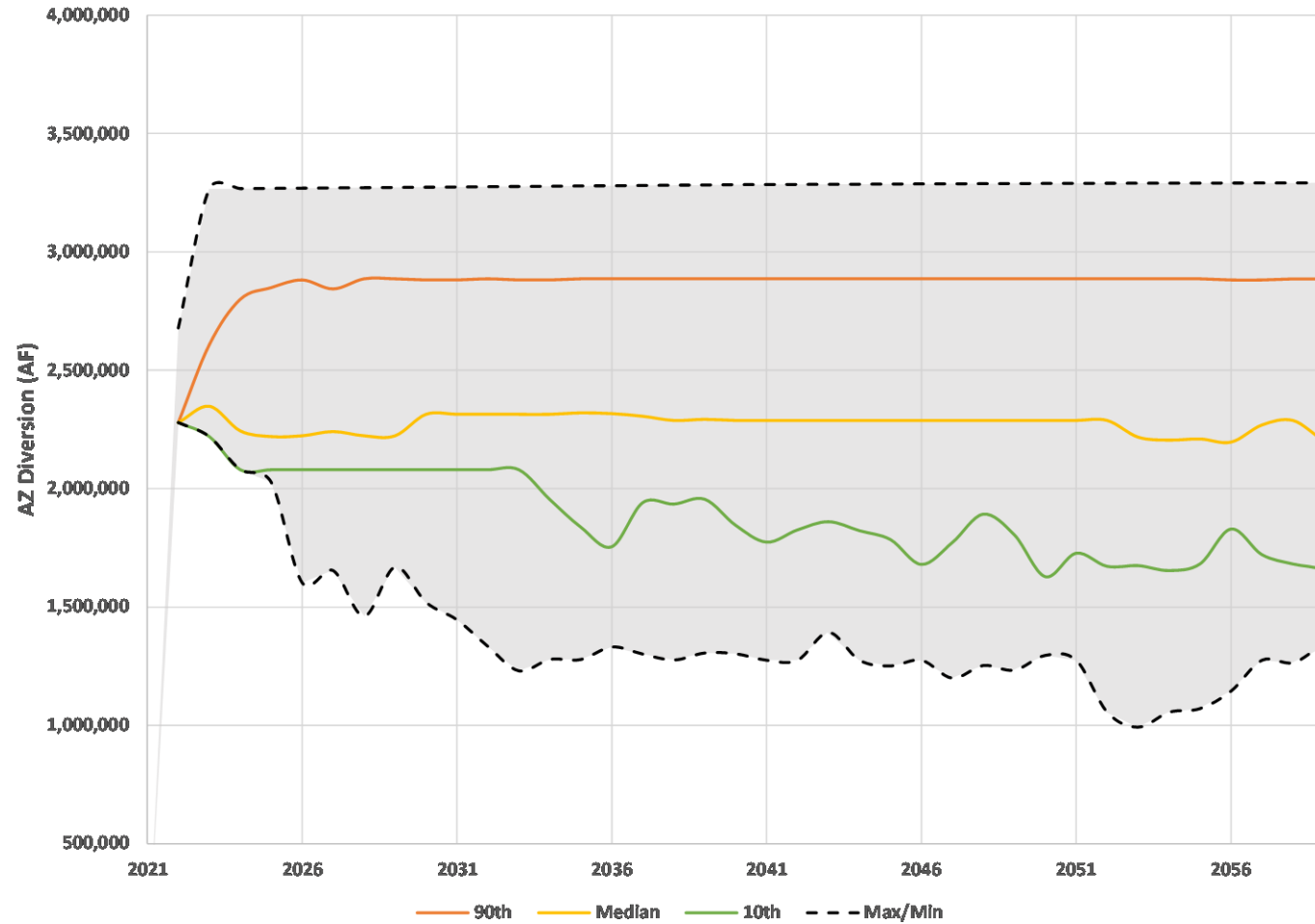


ARIZONA  
RECONSULTATION  
COMMITTEE



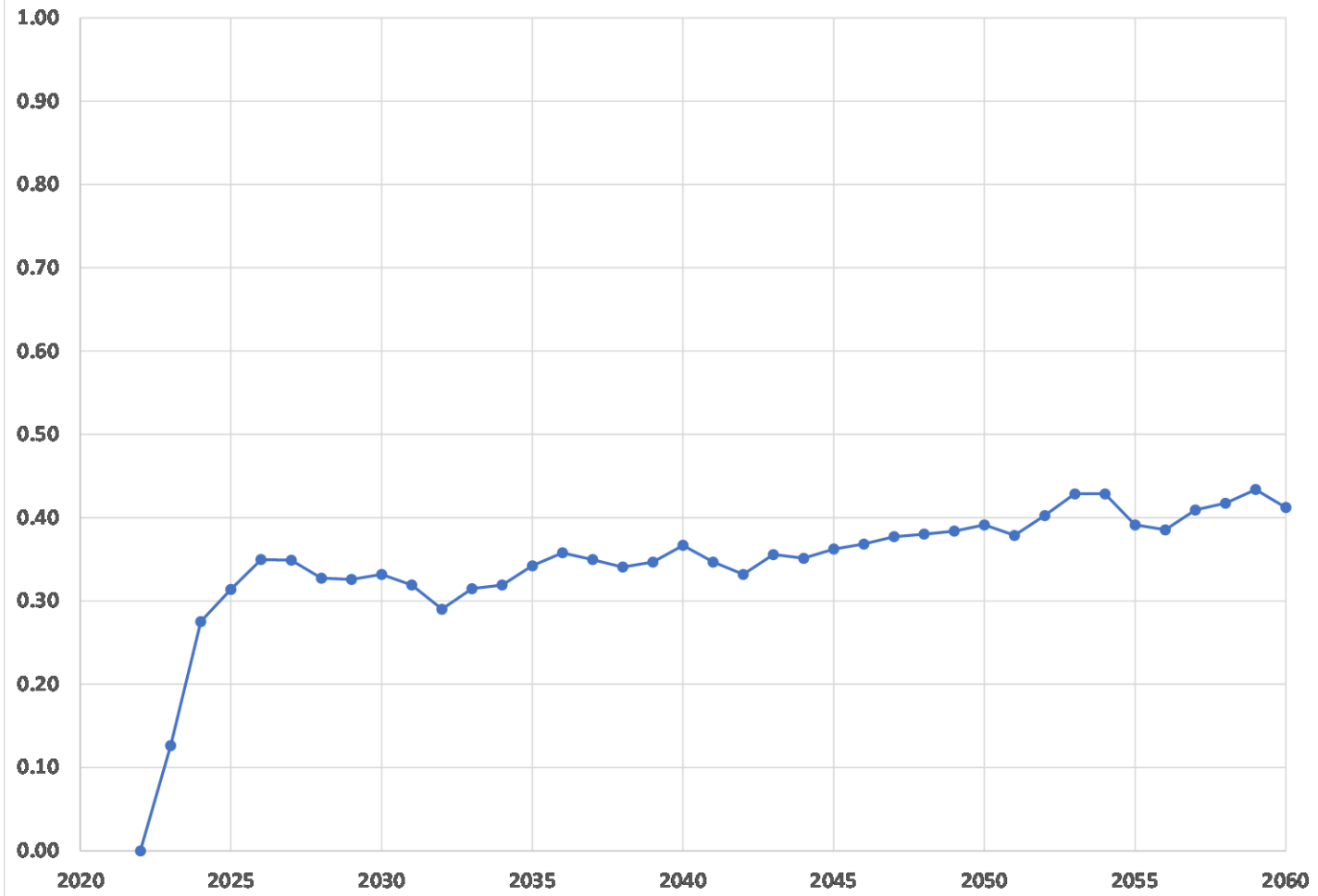
ARIZONA  
RECONSULTATION  
COMMITTEE

AZ Diversion Apr 2021 CRSS\_ARC MAWG\_Scenario 4\_EQ Line 3,652'



ARIZONA  
RECONSULTATION  
COMMITTEE

Probability of Mead Pool  $\leq 1,020'$  In Any Month - Scenario 4\_EQ Line 3,652'

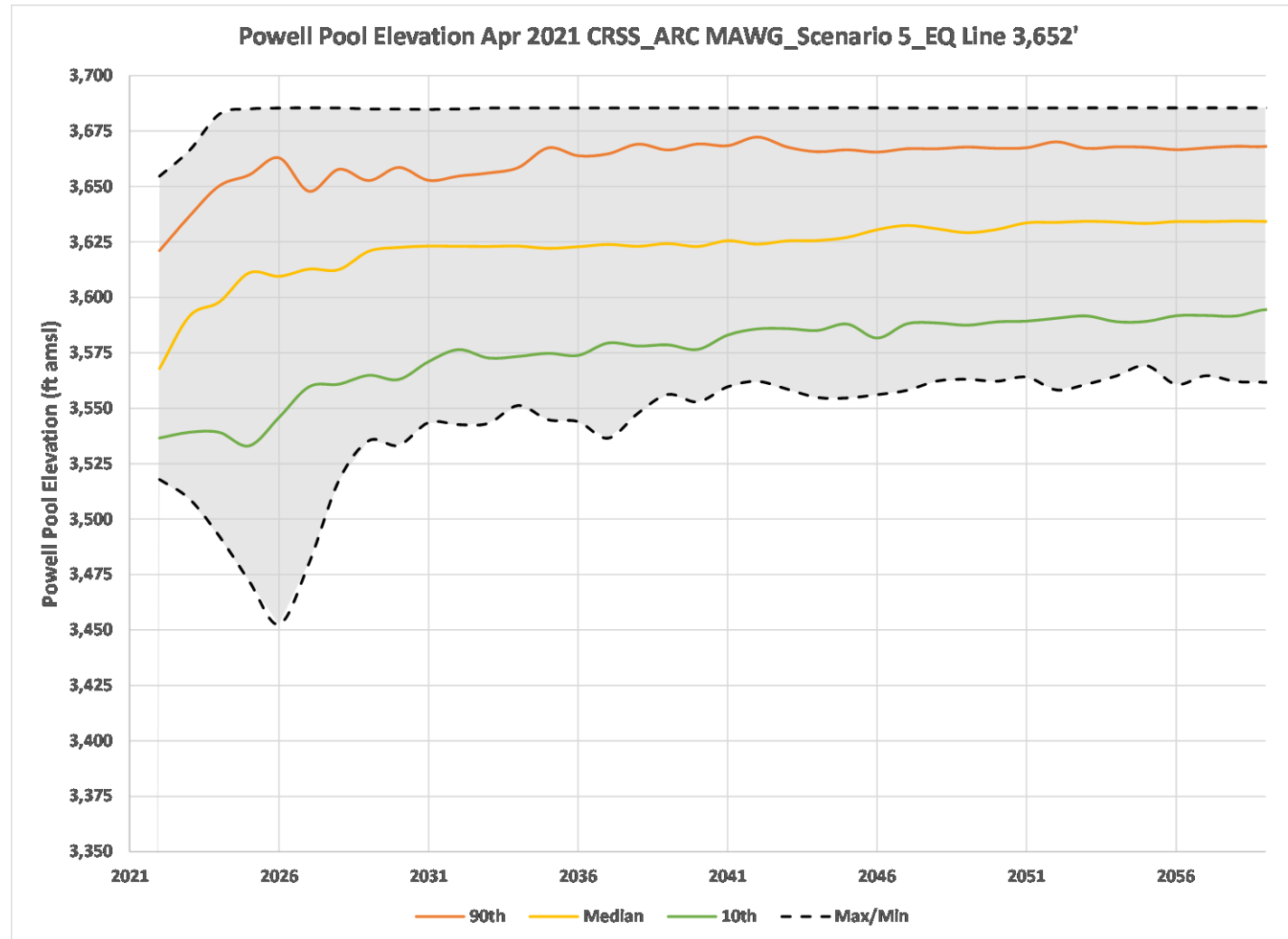


ARIZONA  
RECONSULTATION  
COMMITTEE



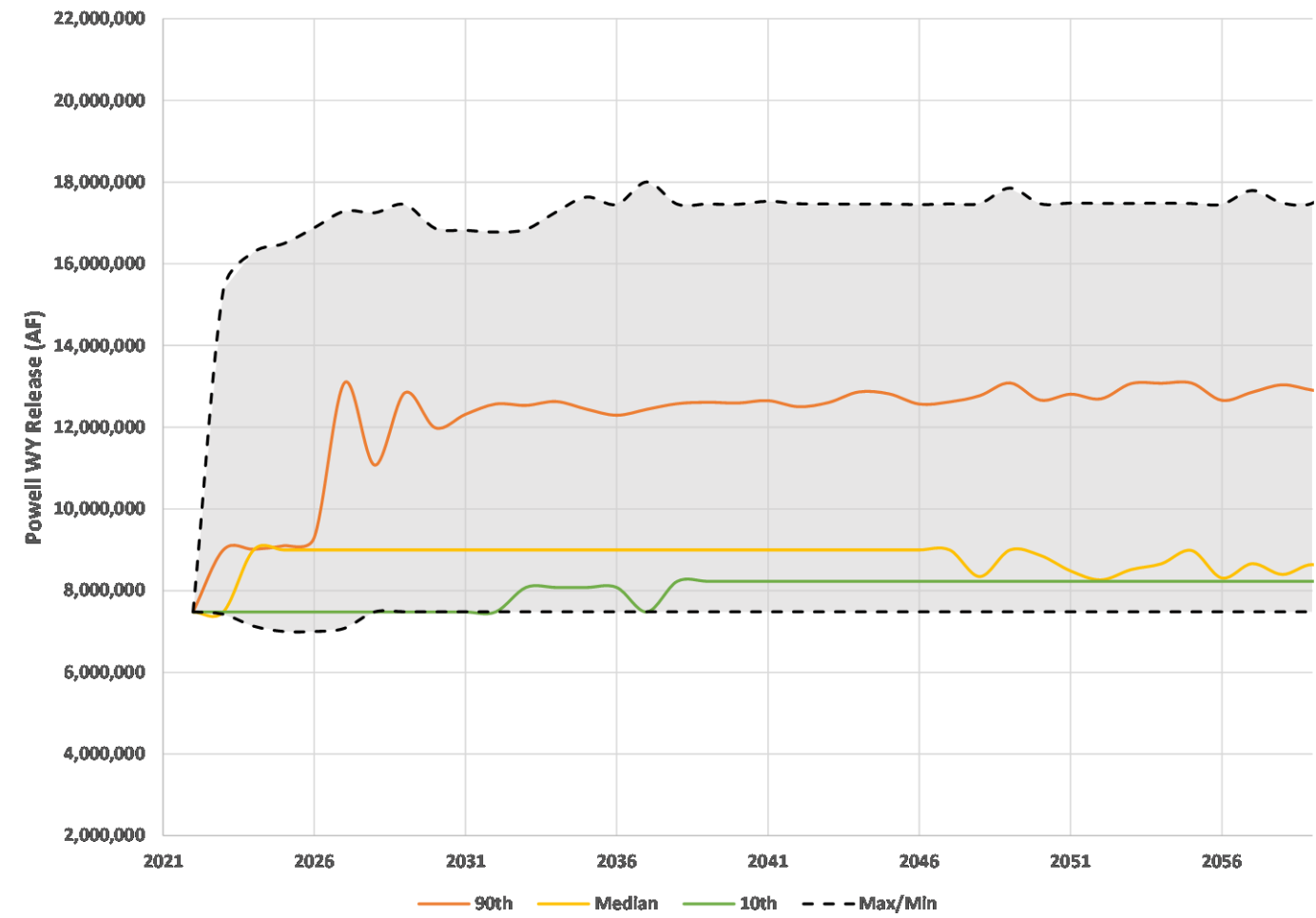
# Scenario 5



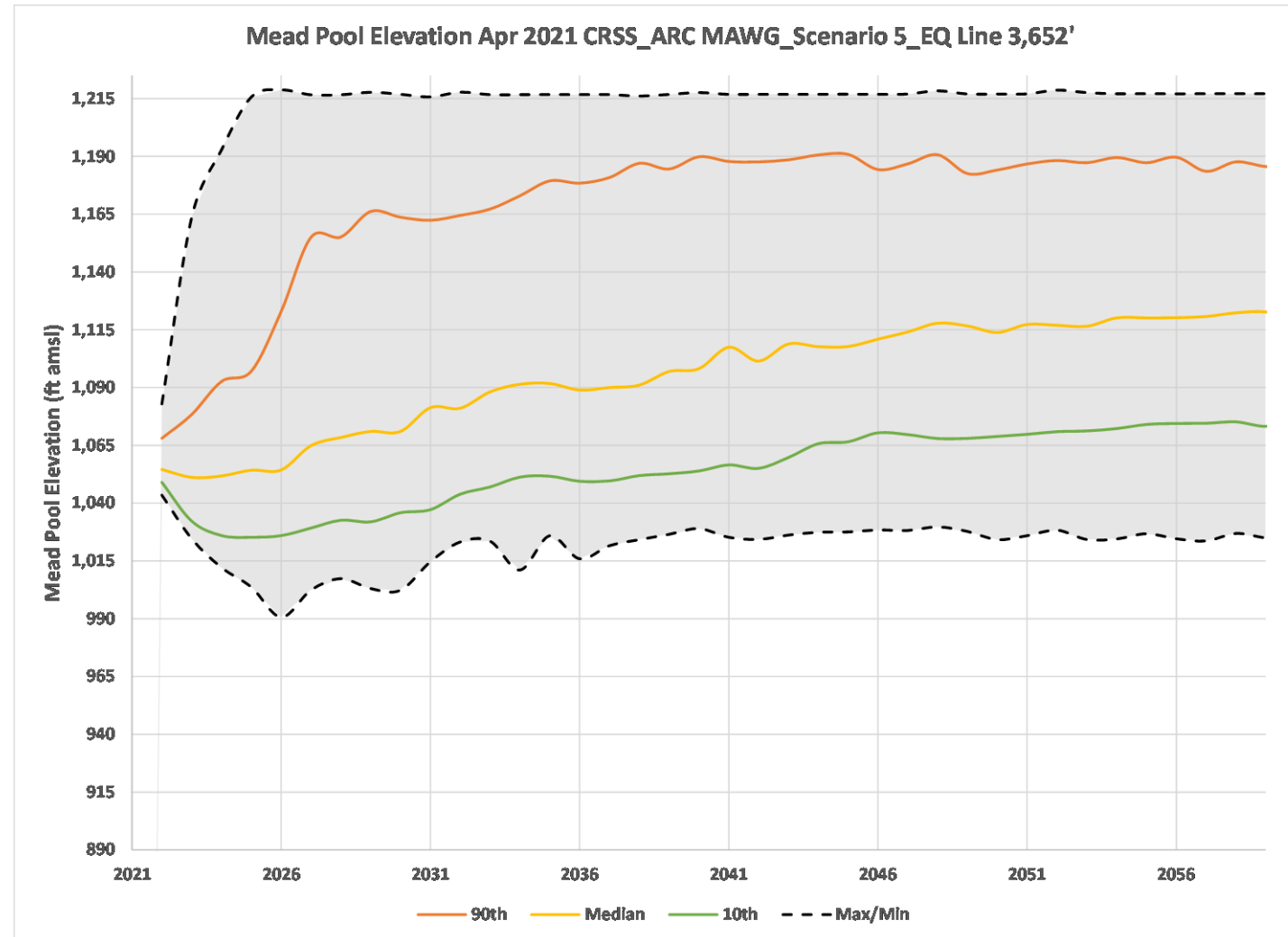


ARIZONA  
RECONSULTATION  
COMMITTEE

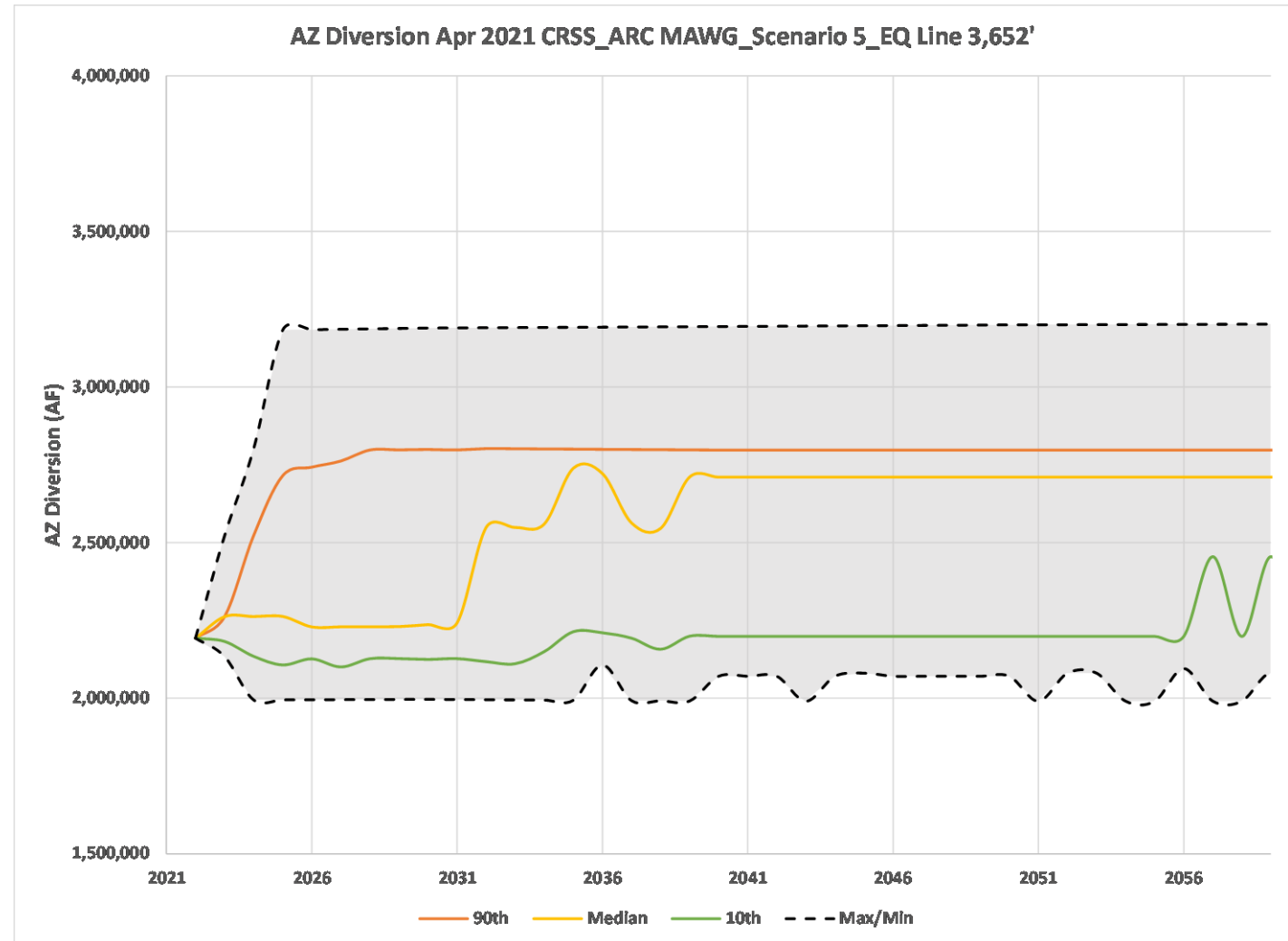
Powell WY Release Apr 2021 CRSS\_ARC MAWG\_Scenario 5\_EQ Line 3,652'



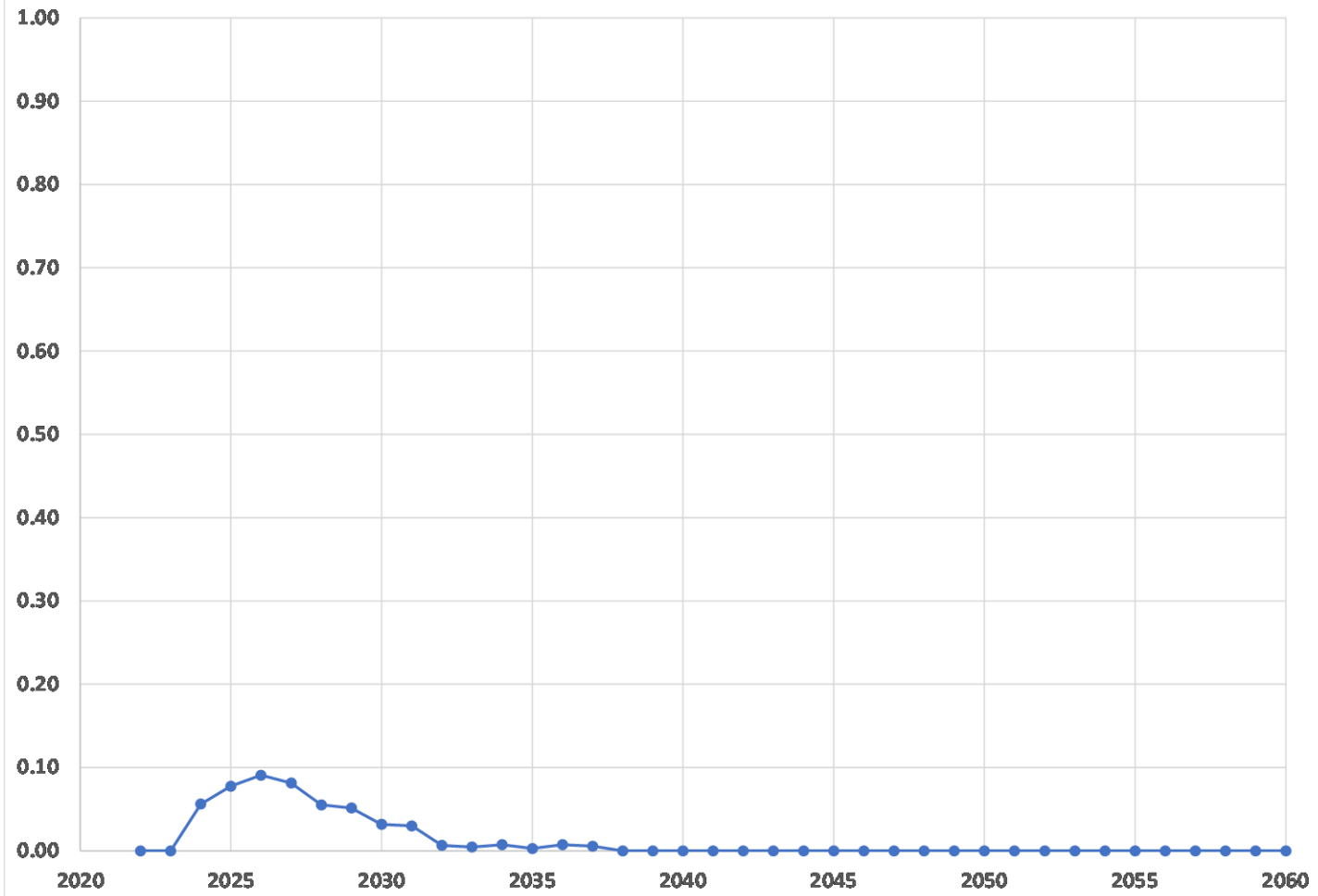
ARIZONA  
RECONSULTATION  
COMMITTEE



ARIZONA  
RECONSULTATION  
COMMITTEE



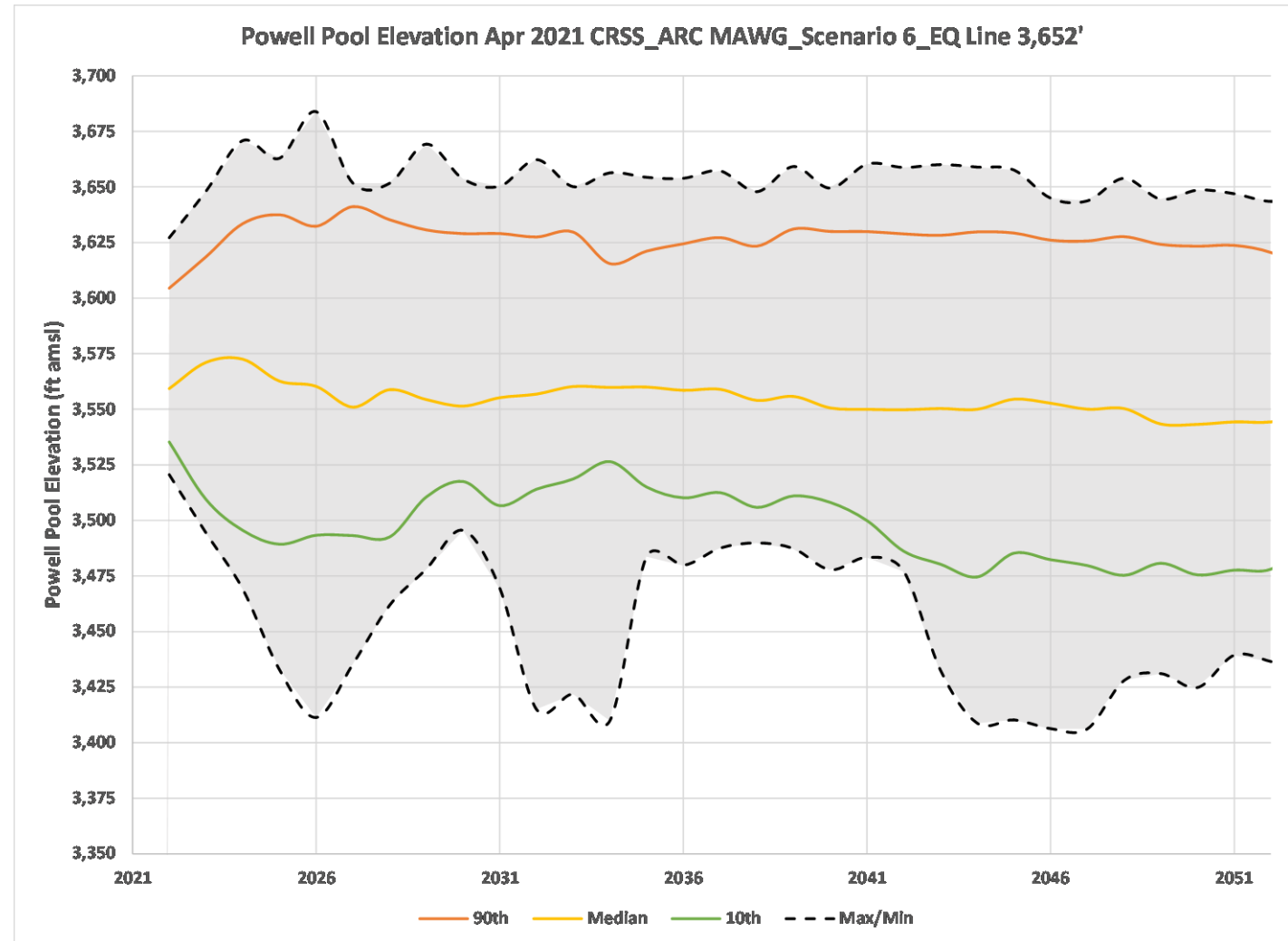
Probability of Mead Pool  $\leq 1,020'$  In Any Month - Scenario 5\_EQ Line 3,652'



ARIZONA  
RECONSULTATION  
COMMITTEE

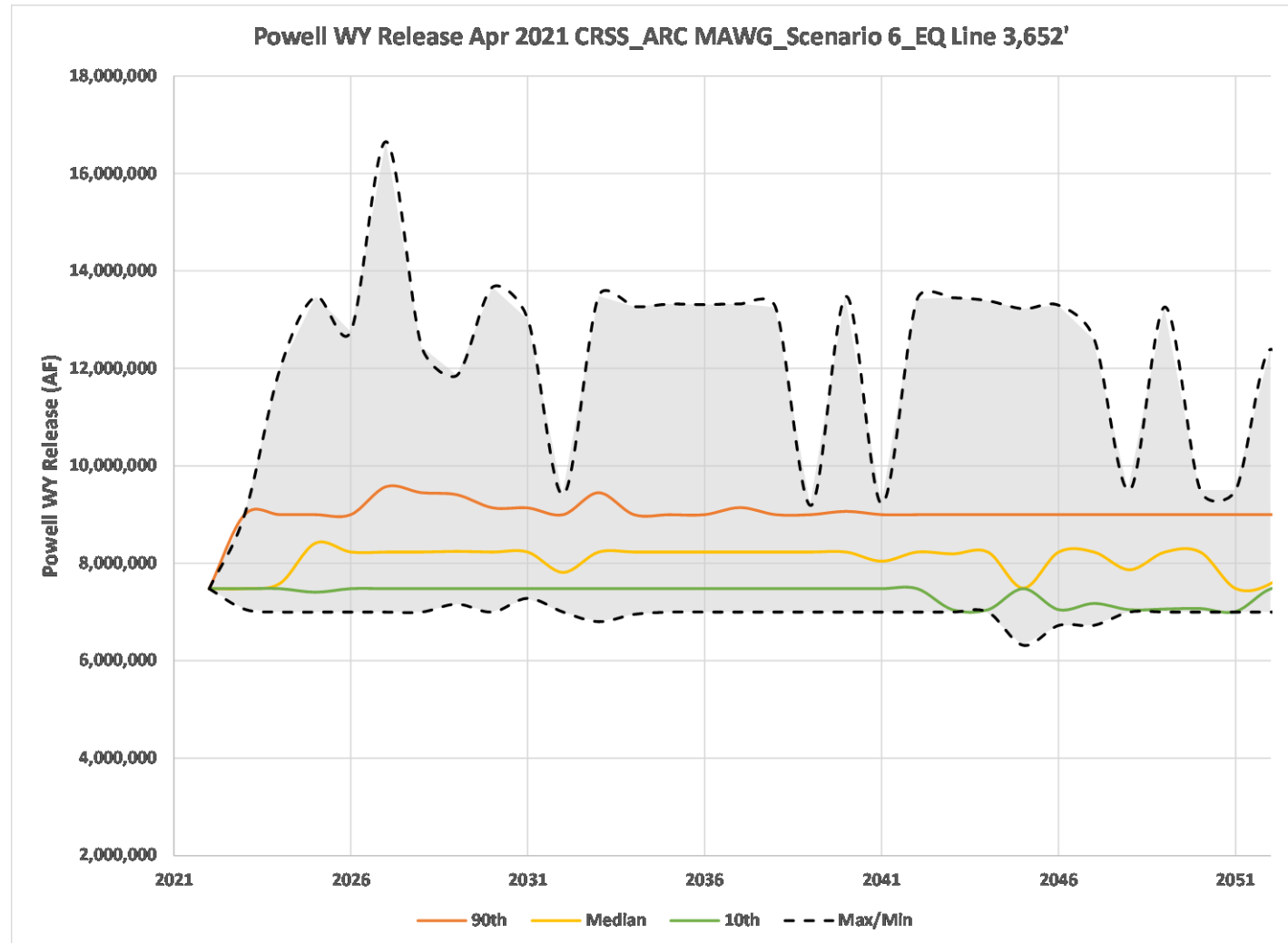
# Scenario 6





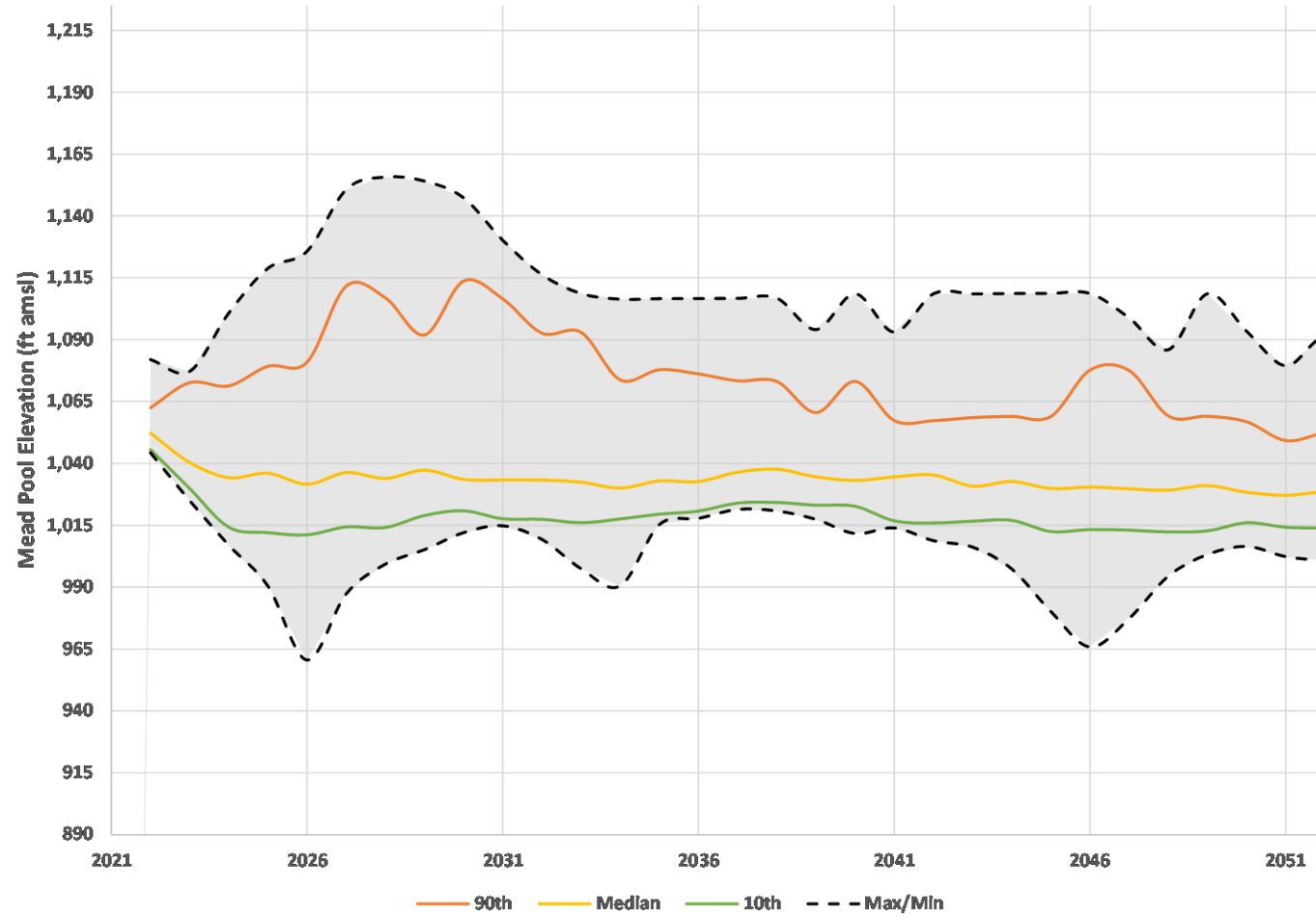
ARIZONA  
RECONSULTATION  
COMMITTEE

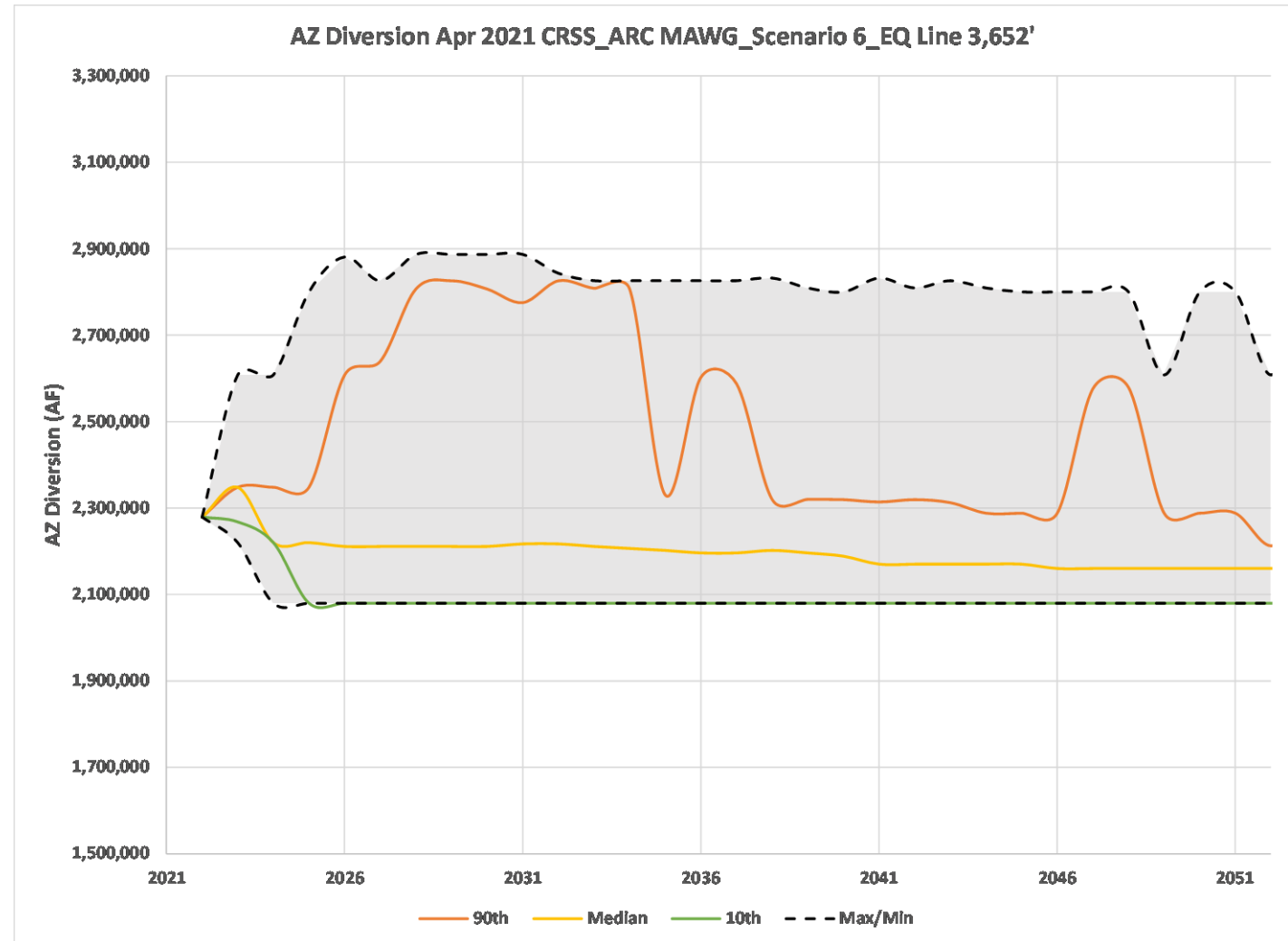




ARIZONA  
RECONSULTATION  
COMMITTEE

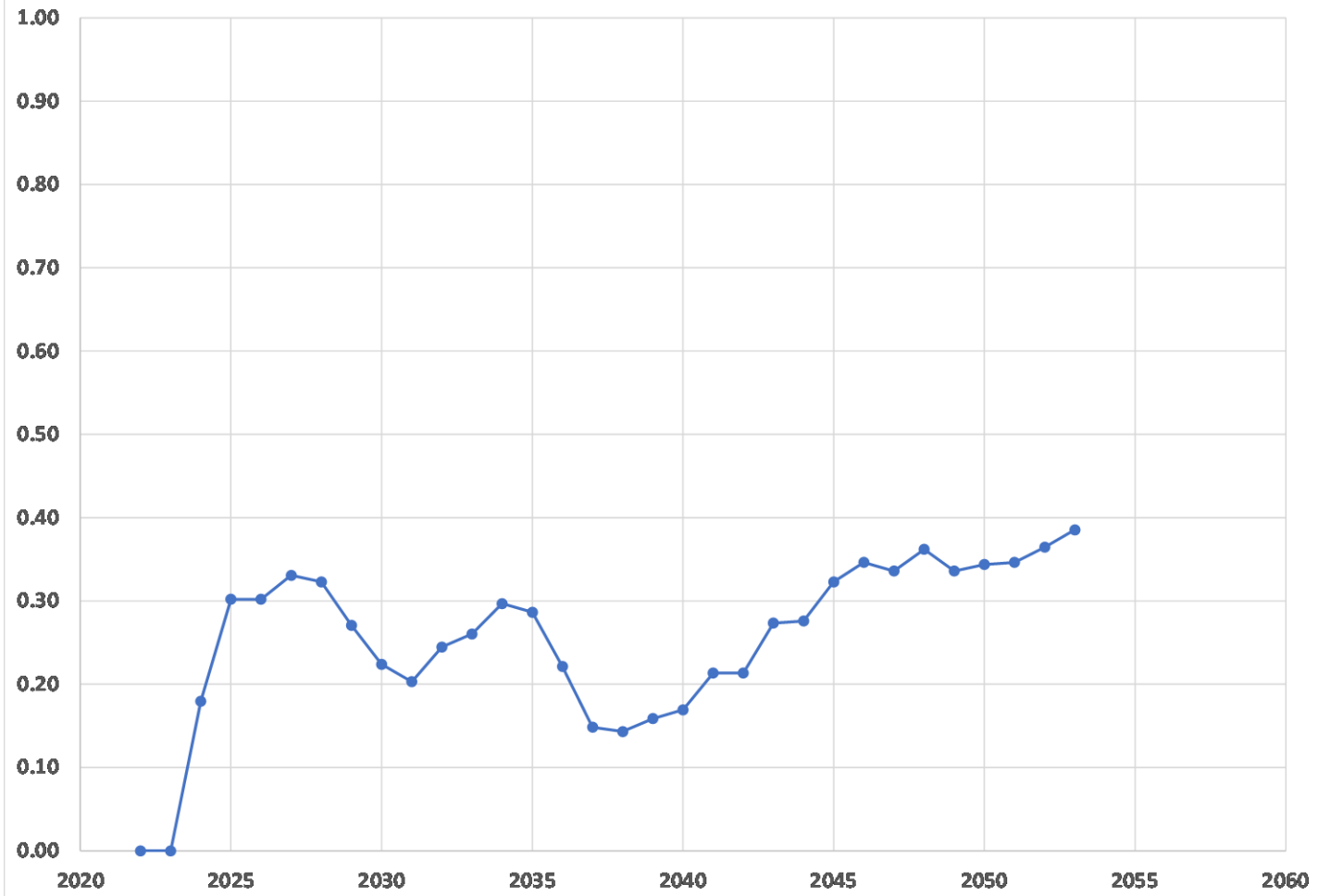
Mead Pool Elevation Apr 2021 CRSS\_ARC MAWG\_Scenario 6\_EQ Line 3,652'





ARIZONA  
RECONSULTATION  
COMMITTEE

Probability of Mead Pool  $\leq 1,020'$  In Any Month - Scenario 6\_EQ Line 3,652'



ARIZONA  
RECONSULTATION  
COMMITTEE