

SALT RIVER PROJECT AND WATER QUALITY

JUNE 6TH 2017

CAWCD WATER QUALITY STANDARDS TASK FORCE MEETING

SRP - Water Quality Services

SRP and Water Quality

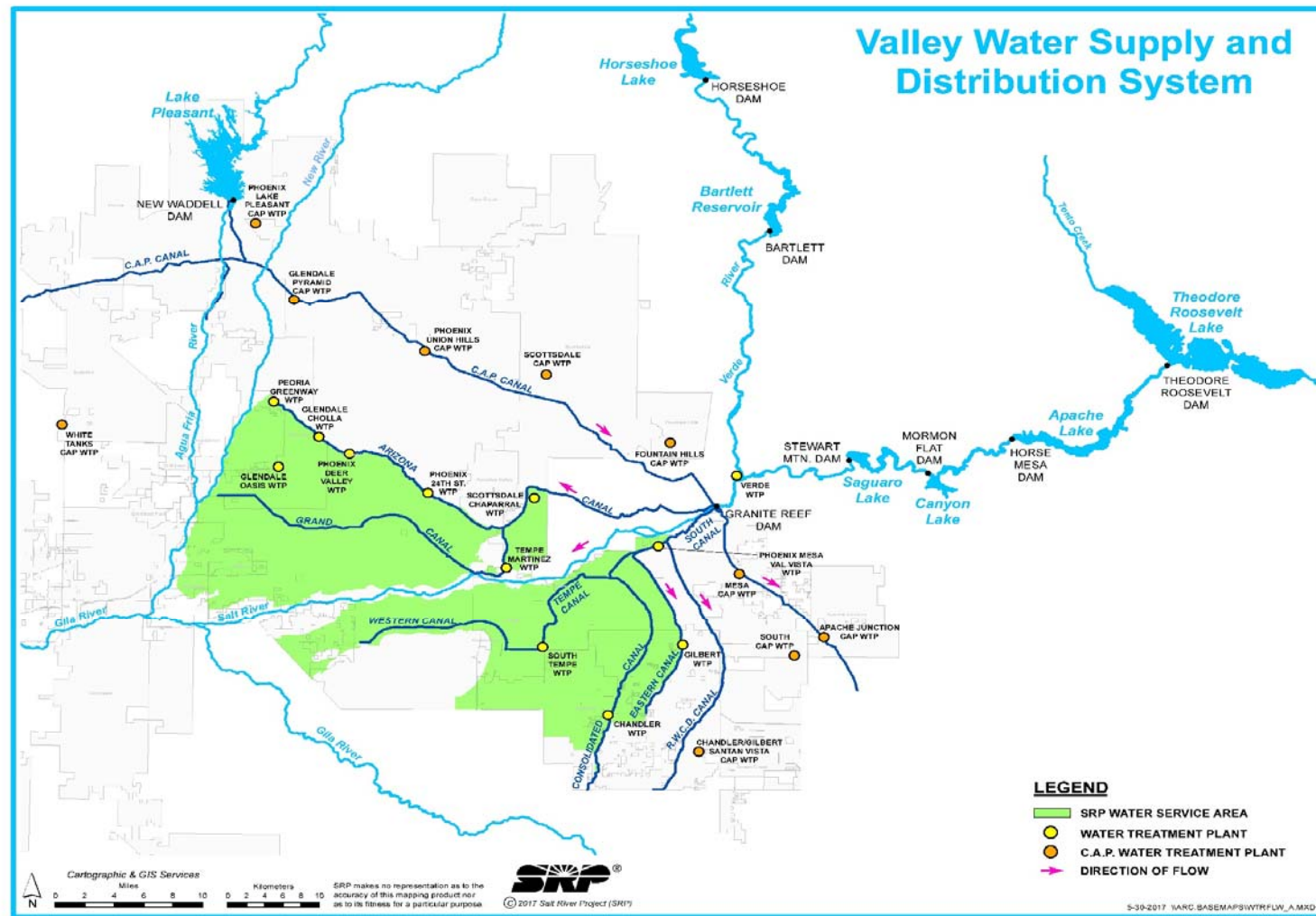
- SRP and CAWCD have important common threads
- What makes us different concerning water quality?
- Why and how SRP manages water quality



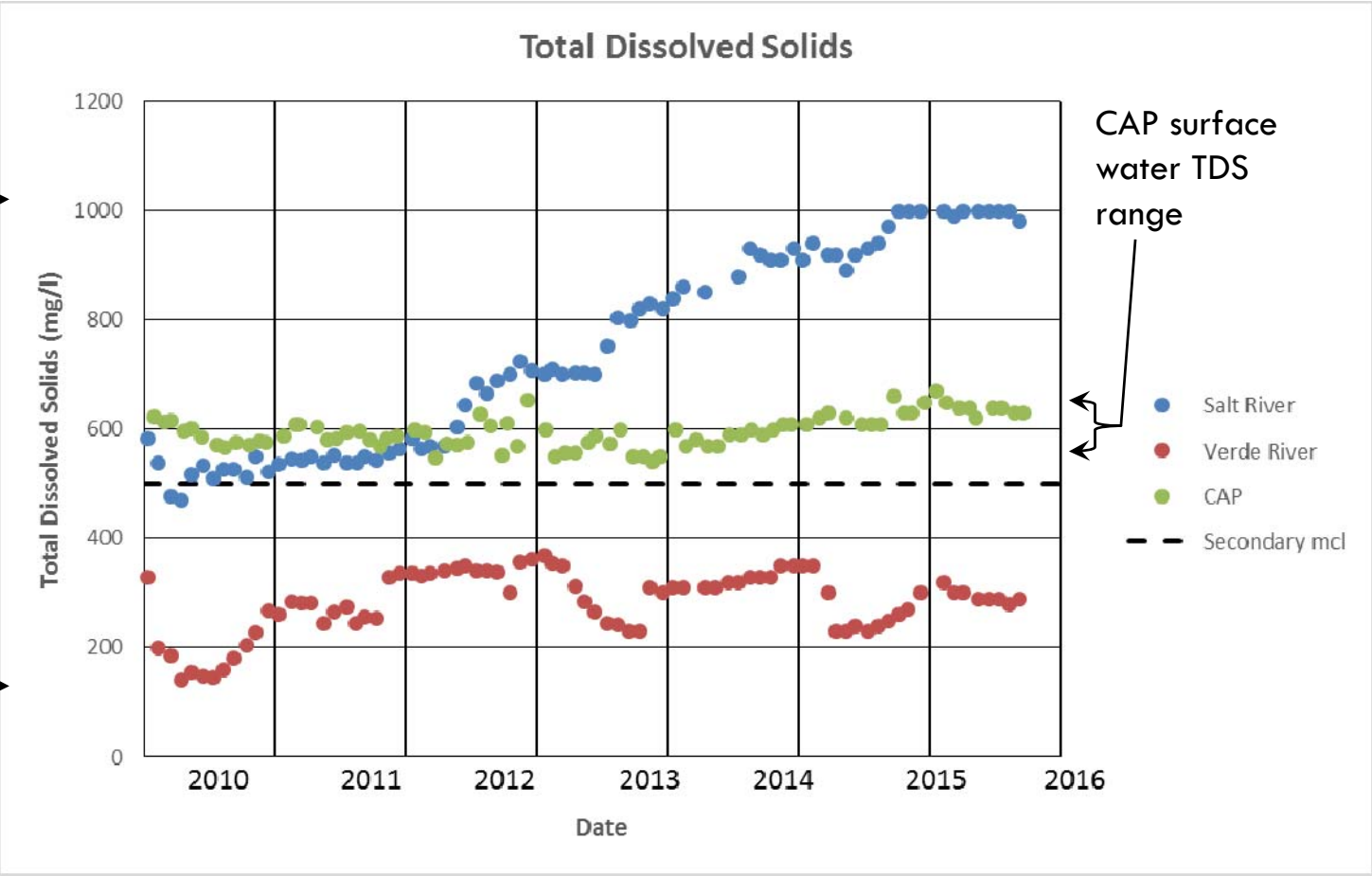
Vital Water Supplies and Infrastructure

CAWCD and SRP

- Federal Reclamation Projects
- Delivering vital raw water supplies



SRP Surface Water Quality is Variable



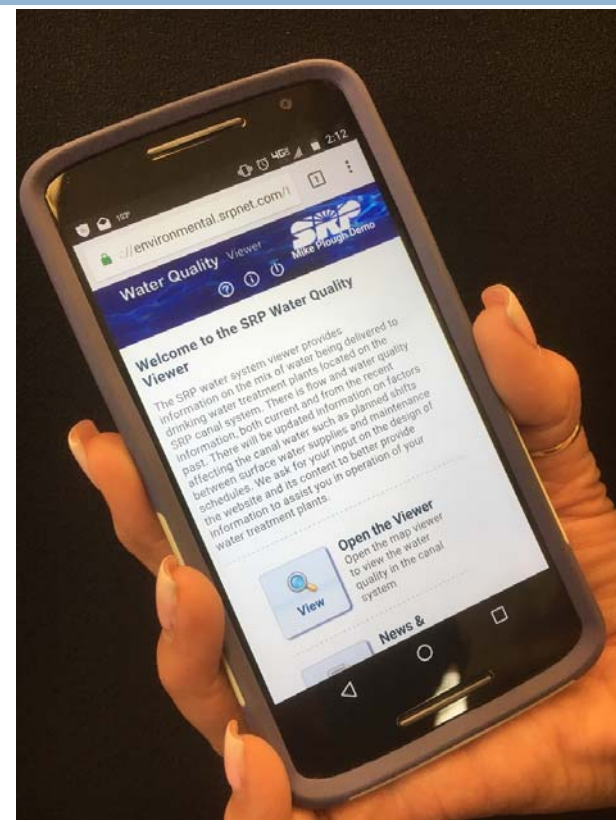
SRP's Groundwater System



- More than 270 wells in SRP's portfolio
- Individual water quality
- Uses
 - ▣ Daily operations
 - ▣ Serve as drought reserve
 - ▣ Physical recovery of on-project storage credits

SRP Water Quality Monitoring

- Routine Water Quality Monitoring
 - ▣ Reservoirs
 - ▣ Rivers
 - ▣ Canals and Laterals – over two dozen sites
 - ▣ Wells
- Real-time Water Quality Monitoring
 - ▣ Real-time nitrate and multi-parameter sensors
 - ▣ Water Quality Viewer Service

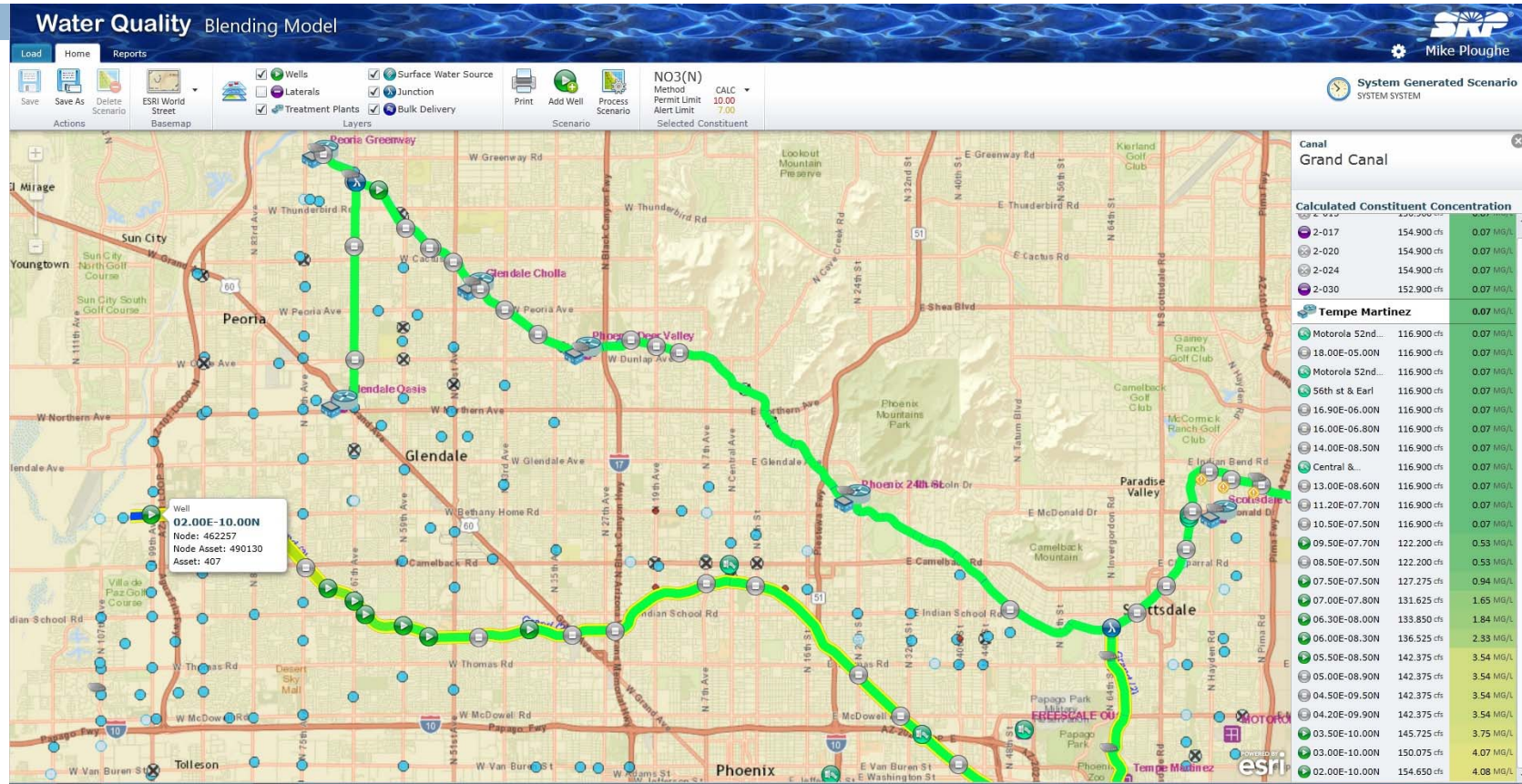


Why SRP Manages Water Quality

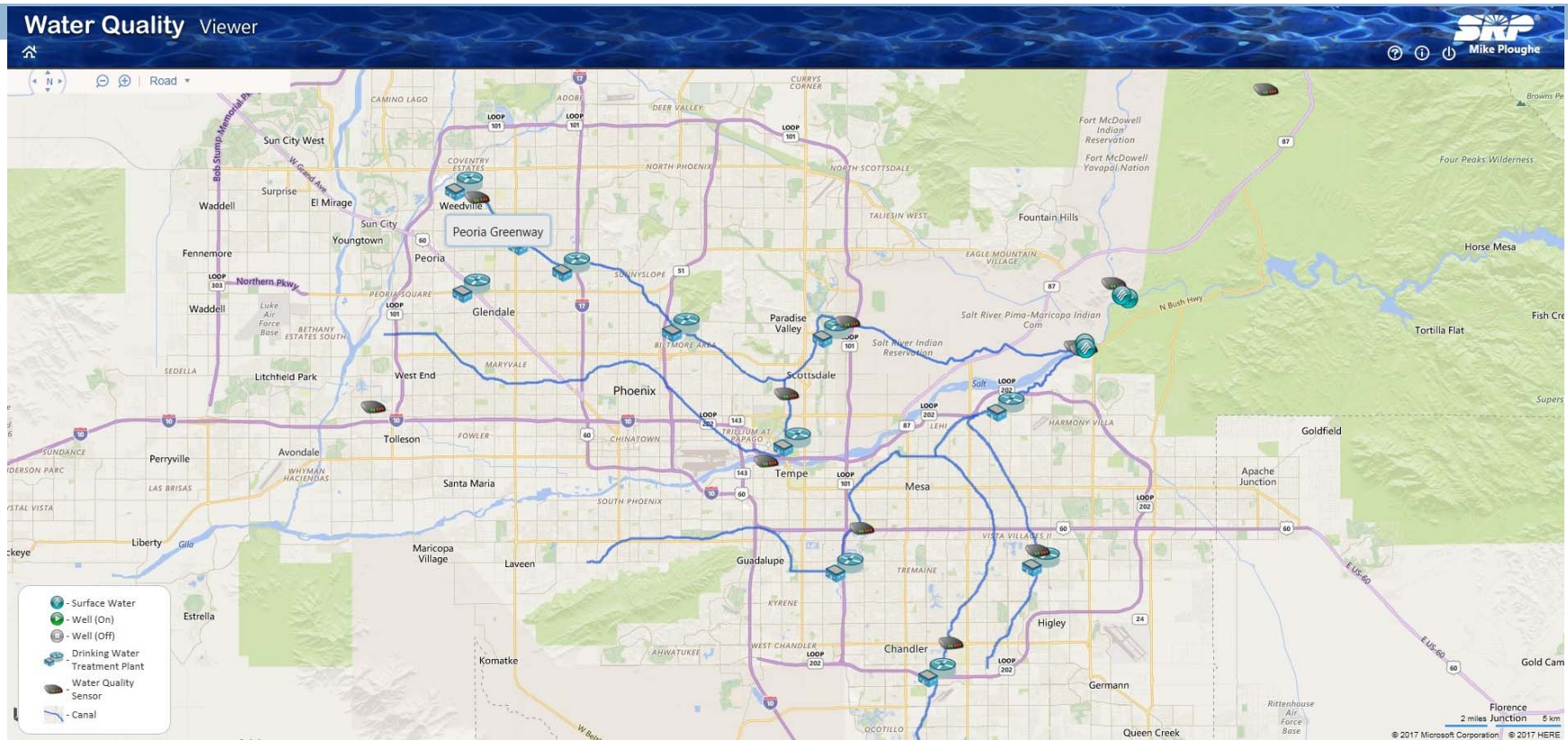
- Maintain operational flexibility
- Responding to customer requests
- Discharge policy
 - ▣ Compliance requirements
 - SRP canals are regulated by the Clean Water Act
 - Domestic water supply, agriculture, and livestock standards
 - Allows blending of surface water and groundwater
 - ▣ SRP Board must approve any non-SRP discharge requests



How SRP Manages Water Quality



How SRP Manages Water Quality



Summary

- Common thread as Federal Reclamation Projects
- SRP water quality is generally variable while CAP water quality is more consistent
- SRP manages water quality from multiple sources
 - ▣ Surface water – Verde and Salt Rivers and CAP via interconnect
 - ▣ Hundreds of wells
 - ▣ Blending
 - ▣ Customer input and services

Thank You!
Questions?

