



Arizona Reconsultation Committee Meeting #13

May 13, 2026



ARIZONA
RECONSULTATION
COMMITTEE

Meeting Logistics Summary

- Roll Call

- Members will acknowledge their attendance when their name is called.

- ARC Delegates

- Please raise your hand to request to speak or ask questions.
- If online, use the Teams “raise hand” feature to request to speak or ask questions.
- Wait to be recognized before speaking to ensure clear communication.

- Livestream Attendees

- Electronic comment forms are available at cap-az.com/ARC to submit a comment or question during the meeting.
- Public submissions will be addressed if time allows.



ARC Meeting #13 Agenda

- Welcome and Opening Remarks
- Hydrology & Operations Update
- Lower Basin States Proposal
- Reclamation's Post-2026 Preliminary Proposal
- Conclusions
- Discussion/Questions



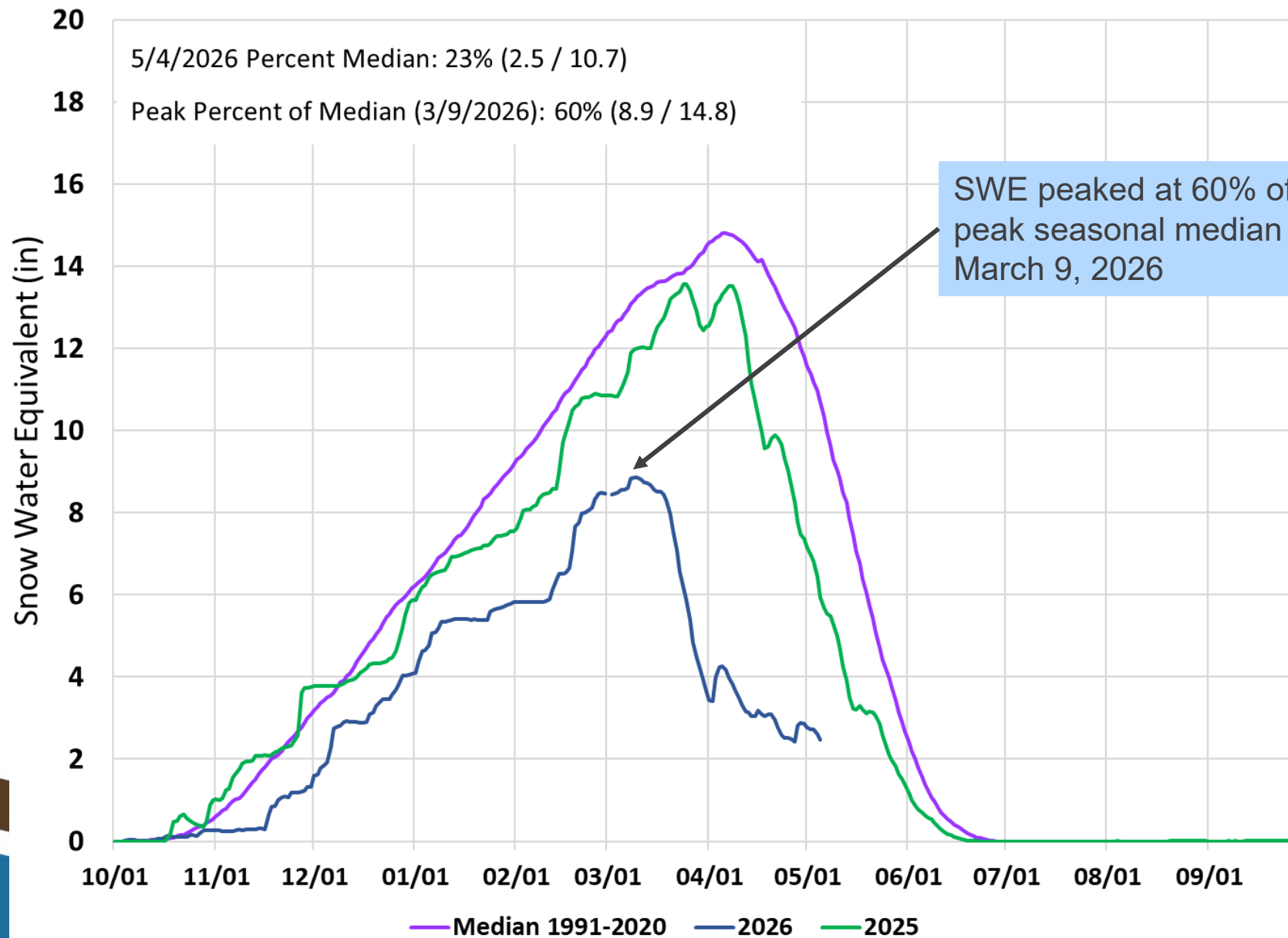
Hydrology & Operations Update

ARC Meeting #13 May 13, 2026



ARIZONA
RECONSULTATION
COMMITTEE

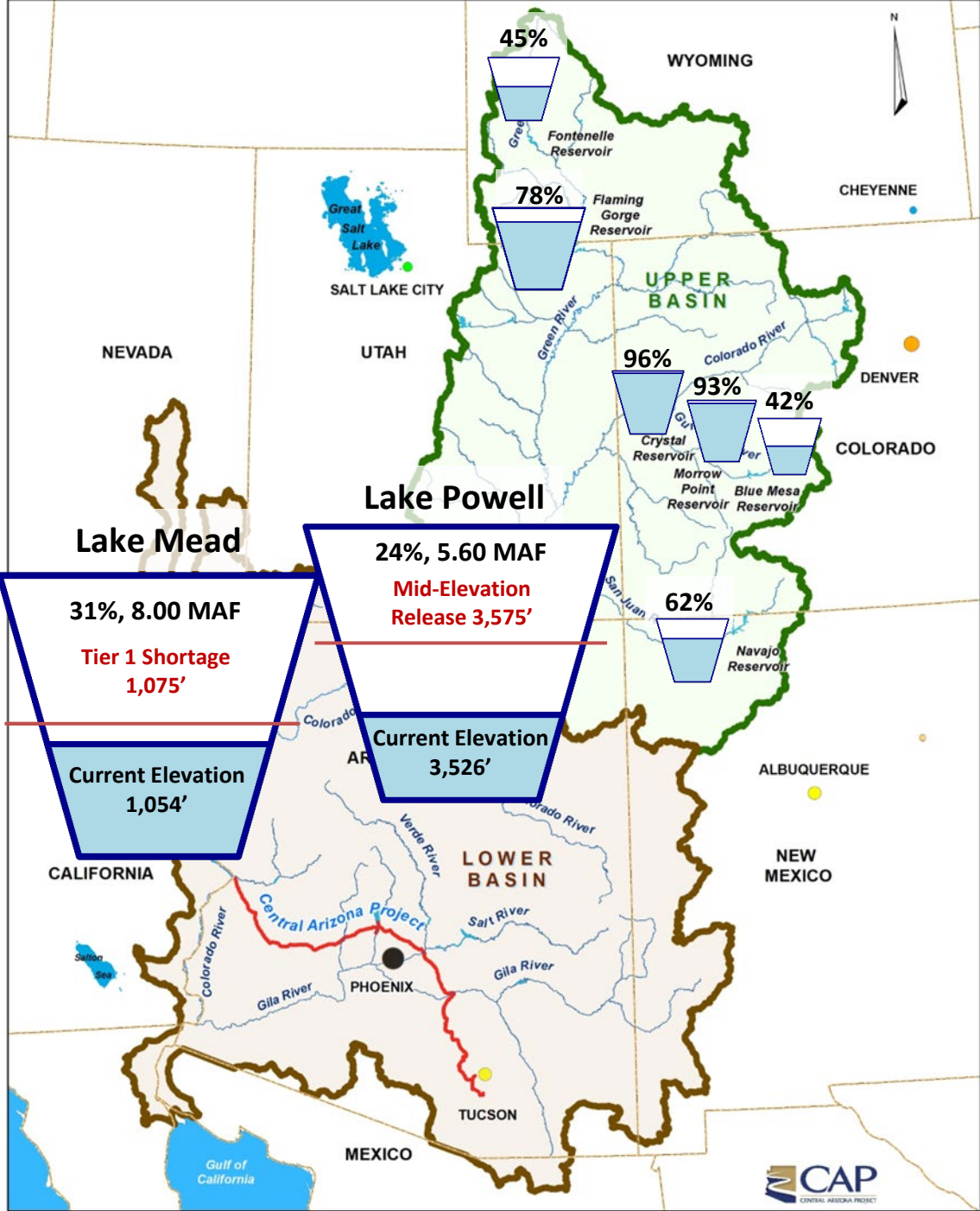
Snow Water Equivalent - Colorado River Basin above Lake Powell



Colorado River Basin Storage

As of May 10, 2026

System Contents: 20.42 MAF (35%)
 Last Year System Contents: 23.42 MAF

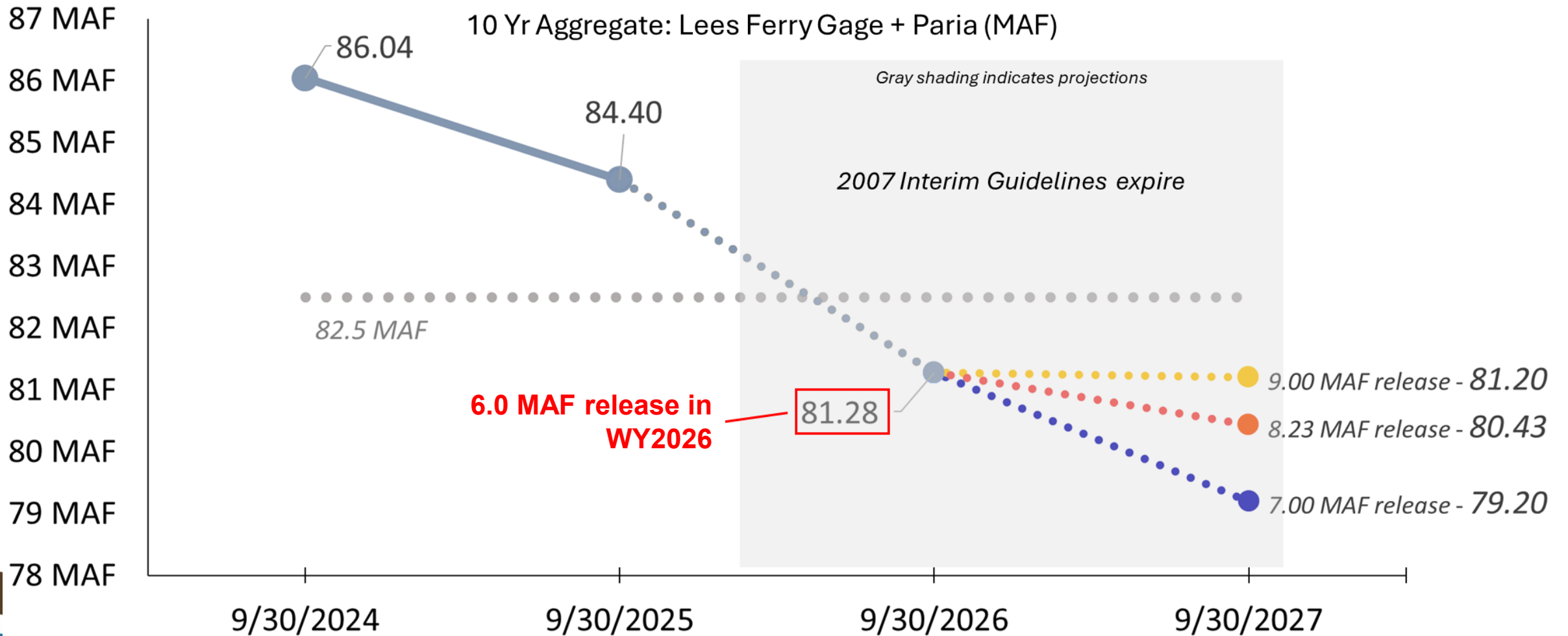


Upper Initial Unit (UIU) and Powell Operations

- On April 22nd the US amended 2026 operations including additional UIU releases and adjusted Powell releases downward
 - Flaming Gorge: ~1 MAF to ~660 KAF
 - Blue Mesa: No deliveries in WY 2026
 - Navajo: No deliveries in WY 2026
- Reclamation has adjusted WY 2026 Powell releases downward from 7.48 MAF to 6 MAF



Compact Compliance



UIU and Powell releases – Arizona Positions

- A Powell release volume below 7.48 MAF causes deficiency under 1922 Compact Articles III(C) and III(D). Arizona is not waiving any rights relating to such deficiency.
- The 2019 Drought Response Operations Agreement (DROA), having expired by its own terms on December 31, 2025, should not inform or govern in any way the release of the proposed additional UIU releases between April 2026 and April 2027
- Reclamation has cited contractual delivery and storage obligations relative to Navajo and Aspinall Unit reservoirs for not releasing additional water in WY 2026. Colorado River Storage Project Act specifically subordinates such contracts and storage to water deliveries to Lower Basin and Mexico under the 1922 Compact.
- Should hydrologic conditions indicate that a lesser volume might be sufficient to protect 3,500' at Powell, any adjustment to the planned releases should be made by increasing releases from Powell – not by reducing releases from the UIUs



Post-2026 Timeline



Post-2026 Timeline Updates

- May 1 Lower Division States submitted their Proposal for Short-Term Operations of the Colorado River
Intended to cover Calendar Years 2026, 2027 and 2028 (“implementation term”)
- May Development of preferred alternative
- Late June Final EIS expected to be published
- Late July Record of Decision expected to be published
- October 1 Implementation of ROD

Reclamation intends to engage with Mexico along with the Basin States (timing TBD)



ARIZONA
RECONSULTATION
COMMITTEE

Lower Division States Proposal



ARIZONA
RECONSULTATION
COMMITTEE

Lower Division States' Proposal Elements

The proposal is an integrated, non-severable package that encompasses:

- Lower Basin Reductions
- Intentionally Created Surplus (ICS)
- Establishment of a Tribal Pool
- Additional Lower Basin Conservation
- Lake Powell Releases
- Upper Initial Unit (UIU) Operations
- Infrastructure improvements, including to Glen Canyon Dam, as well as development of system projects



Lower Basin Reductions

- Lower Basin reductions of 1.25 million acre-feet annually, allocated:
 - Arizona: 760 KAFY
 - California: 440 KAFY
 - Nevada: 50 KAFY
- Contributions may be reflected through reduced water orders or applying ICS subject to limitations
- If most probable projection of any 24-MS shows Lake Mead $< 1,010'$, Reclamation will consult with the Lower Division States for additional actions required to protect elevation 975'



Lower Basin Reductions and Additional Conservation

	Arizona	California	Nevada	Total Lower Division States
2027	760 KAF	440 KAF	50 KAF	1,250 KAF
2028	760 KAF	440 KAF	50 KAF	1,250 KAF
Total Reductions 2027-2028				2,500 KAF
Additional Conservation 2027-2028	300 KAF	300 KAF	100 KAF	700 KAF¹
Total Reductions and Conservation	1,820 KAF	1,180 KAF	200 KAF	3,200 KAF

¹The Lower Division States anticipate working to a target of a cumulative contribution of at least 1 MAF if possible.



ARIZONA
RECONSULTATION
COMMITTEE

Lower Basin Conservation

- Lower Division States intend to work to exceed the minimum, if possible, to target a cumulative contribution of at least 1 MAF
- Lower Division States' contributions are contingent on the deployment of Federal funding
- \$354M anticipated from the US toward system conservation water
 - Cost share between Federal government and Lower Basin
 - Potentially contributed water at no cost
 - Discounted prices from IRA Bucket 1 Agreements
- Reclamation will account for all additional system conservation separately in its Decree Accounting Report and will apply annual evaporation losses of 3% to the total volume



Intentionally Created Surplus: Creation/Accumulation/Losses

ICS Rule	2007 Guidelines	LBDCP	LB Proposal
Annual Creation Limit	CA – 400 KAF AZ – 100 KAF NV – 125 KAF	Additional flexibility for states to share the ICS creation capacity within the total annual limit of 625 KAF	CA – 400 KAF AZ – 125 KAF NV – 125 KAF
Maximum ICS Accumulation Limit	CA – 1,500 KAF AZ – 300 KAF NV – 300 KAF	CA – 1,700 KAF AZ – 500 KAF NV – 500 KAF	CA – 2 MAF AZ – 1 MAF NV – 800 KAF
System Assessment & Evaporative Losses	<ul style="list-style-type: none"> One-time 5% system assessment 3% annually when Mead is above 1,075' No assessment under shortage conditions 	One-time 10% assessment upon creation through 2026	<ul style="list-style-type: none"> One-time 10% system assessment in Year 1 3% evaporative losses to most ICS assessed annually Year 2 onward Brock ICS will not be assessed evaporative losses

Intentionally Created Surplus: Deliveries*

*This element of the proposal is under continued discussion with Reclamation

ICS Rule	2007 Guidelines	LBDCP	LB Proposal				
Delivery of ICS	<ul style="list-style-type: none"> ICS can be delivered through 2036 No delivery when Mead below 1,075' Annual limits: CA – 400 KAF AZ – 300 KAF NV – 300 KAF 	<ul style="list-style-type: none"> DCP ICS can be delivered through 2057 No delivery when Mead below 1,025' When Mead is between 1,045' and 1,025', conversion of EC ICS to DCP ICS counts toward delivery limit Delivery of DCP ICS has repayment obligations or deductions to the account depending on the year and Mead elevation 	<ul style="list-style-type: none"> ICS can be delivered through 2038 				
			Delivery Limits	CA	AZ	NV	
			Above 1025:	400 KAF	200 KAF	50 KAF	
			Below 1025 and above 1010:	267 KAF	100 KAF	50 KAF	
			Below 1010 and above 1000:	133 KAF	33 KAF	33 KAF	
			Below 1000:	No Deliveries			
						<ul style="list-style-type: none"> ICS can be used to meet reductions by converting to system water ICS may be used to offset inadvertent overruns in any year up to 25 KAF (State Limit) 	

Tribal Pool

- Establish a new conservation pool in Lake Mead to ensure the federal government can meet trust commitments to Indian Tribes in Arizona
- Tribal Pool will be a federal responsibility
- Arizona tribe(s) will contribute water to the Tribal Pool
- No Lower Division State contribution to the Tribal Pool
- Some existing ICS from the Federal section of the Arizona ICS account will be transferred to the Tribal Pool
- Anticipate the contributions to the pool will be ~280 KAF through 2028
- Tribal Pool will be accounted for within the ICS limitations for Arizona and will *not* be operationally neutral



Operation of the Upper Initial Units (UIUs) of the Colorado River Storage Project Act

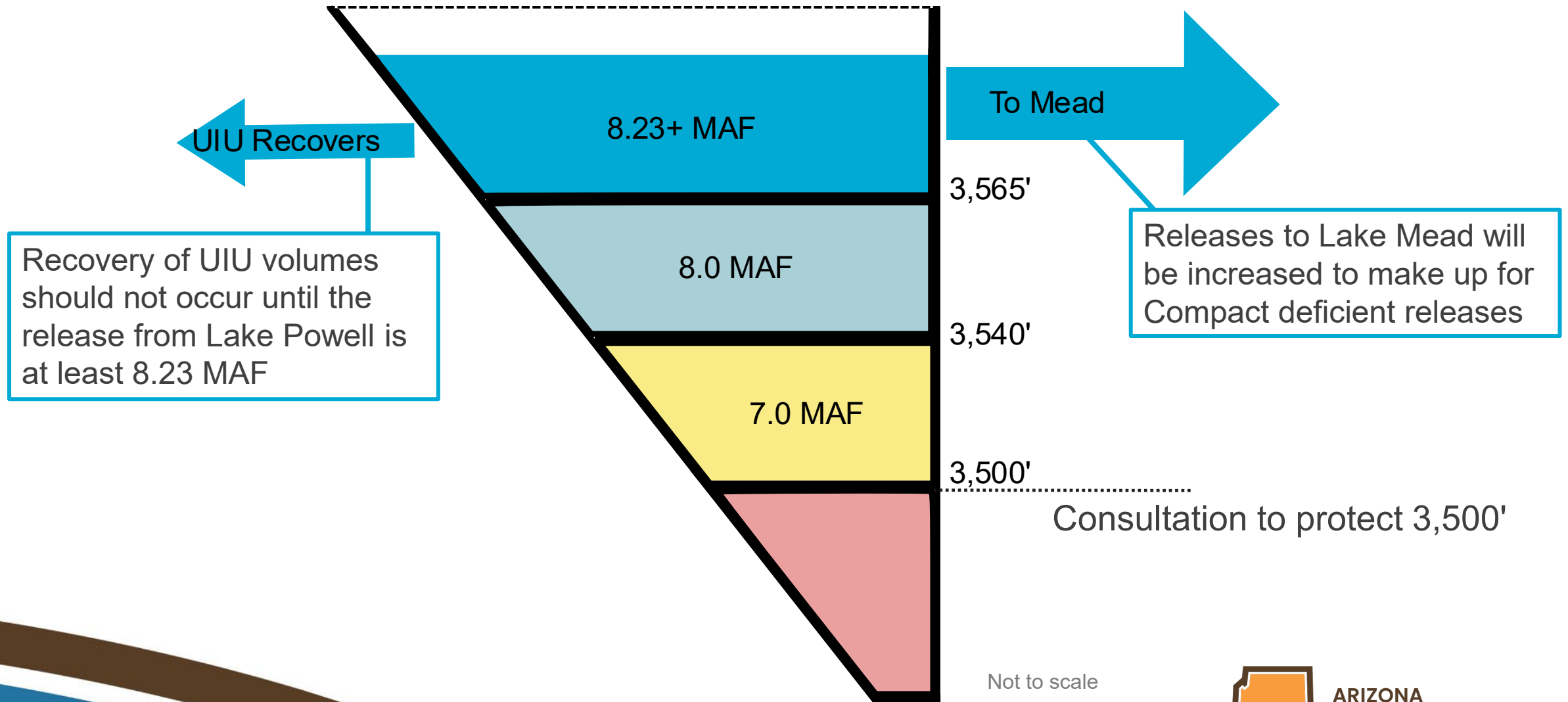
- Reclamation should initiate the process early enough to begin UIU releases above baseline in early March, beginning in 2027, dependent upon Lake Powell projected elevations
- If Lake Powell projected to fall below 3,515' in the minimum 24-MS, UIU releases at least 600 KAF above baseline
- Releases above baseline from UIUs shall be system water and shall not be considered operationally neutral for determining operations of Lake Powell
- Recovery of UIU volumes should not occur until the release from Lake Powell is at least 8.23 MAF (i.e., Lake Powell elevation is at least 3,565')



Release from Lake Powell to Lake Mead

Year	Powell Release	Adjustments
WY 2026	6 MAF	
WY 2027 onward	<p>8 MAF if Powell at or above 3,540' on October 1</p> <p>7 MAF if Powell below 3,540' on October 1</p>	<p>Downward</p> <p>Consultation - If Reclamation's minimum probable forecast of hydrologic conditions and UIU augmented releases are insufficient to keep Lake Powell from falling < 3,500' during the water year</p> <p>Upward</p> <p>Adjust to 8.23 MAF or greater - If Lake Powell is projected to end the water year > 3,565' and allow for recovery of water from the UIUs</p>

Proposed Powell Operations



Additional Items

- By the EOY 2027, DOI shall develop and publish a plan to address long-term operational and structural risks at Glen Canyon Dam. The plan must be developed in consultation with the Lower Division States and be implemented no later than EOY 2028
- As a pilot, Reclamation will operate the river outlet works to test infrastructure performance for extended release periods during the implementation term
- Reclamation will confirm and implement federal investment in various necessary improvements in the management of the Colorado River system, especially in federal infrastructure in the Yuma area
- Reclamation, with the Lower Division States and stakeholders, should develop a framework for the exchange of augmented water among existing Section 5 contractors



Summary

- Reclamation encouraged the Lower Division States to find a consensus proposal and provided constructive input to avoid fatal flaws
- Lower Division States continue to work with Reclamation to refine elements of the proposal, including:
 - Powell-Mead Releases
 - Intentionally Created Surplus
 - UIU Releases
- The Proposal preserves Lower Division States' ability to enforce legal rights, including Compact requirements.



LB Proposal Analysis



LB Proposal Modeling

April 2026 Colorado River Mid-term Modeling System (CRMMS)

- Simulation period from April 2026 through December 2028
- Simulates over 30 traces, representing 1991-2020 hydrology (following index sequential method)

April 2026 CRMMS LB Proposal modeling representation:

- Includes proposed UIU releases – *1 MAF 26/27, 600 KAF 27/28, 600 KAF 28/29*
- Powell releases with CRMMS function to reduce releases to 6.0 MAF to protect 3,500'
- Lower Basin reductions of 1.5 MAF*
- Lower Basin States additional conservation of 700 KAF from Jan 2027 through Dec 2028
- Restricted ICS utilization – limiting ICS delivery as described in the LB proposal
- Includes Tribal Pool

*Assuming 250 KAF reduction from Mexico, pending U.S. negotiations



ARIZONA
RECONSULTATION
COMMITTEE

Select CRMMS Traces

Hydrology is the greatest driver for Powell and Mead elevations

Powell Inflow Year	Trace 14 (2001-2002-2003)		Trace 25 (2012-2013-2014)		Trace 15 (2002-2003-2004)		Trace 18 (2005-2006-2007)	
	[MAF]	%	[MAF]	%	[MAF]	%	[MAF]	%
2026	3.914	41%	2.750	29%	2.589	27%	4.088	43%
2027	2.414	25%	4.214	44%	6.622	69%	7.339	76%
2028	6.820	71%	9.496	99%	7.269	76%	8.608	90%

Dry



Approaching average

Water Year 2026 Forecast

April Min Prob = 3.01 MAF (31%)
 May Most Prob = 3.27 MAF (34%)




ARIZONA
 RECONSULTATION
 COMMITTEE

Powell Releases under select CRMMS Traces

Furthermore, the **sequence of water year releases from Powell** have the greatest impact on Mead elevations

Powell WY Releases (MAF)	Trace 14 (2001-2002-2003)	Trace 25 (2012-2013-2014)	Trace 15 (2002-2003-2004)	Trace 18 (2005-2006-2007)
2026	6	6	6	6
2027	6	6	7	7
2028	6.25	7	7	7

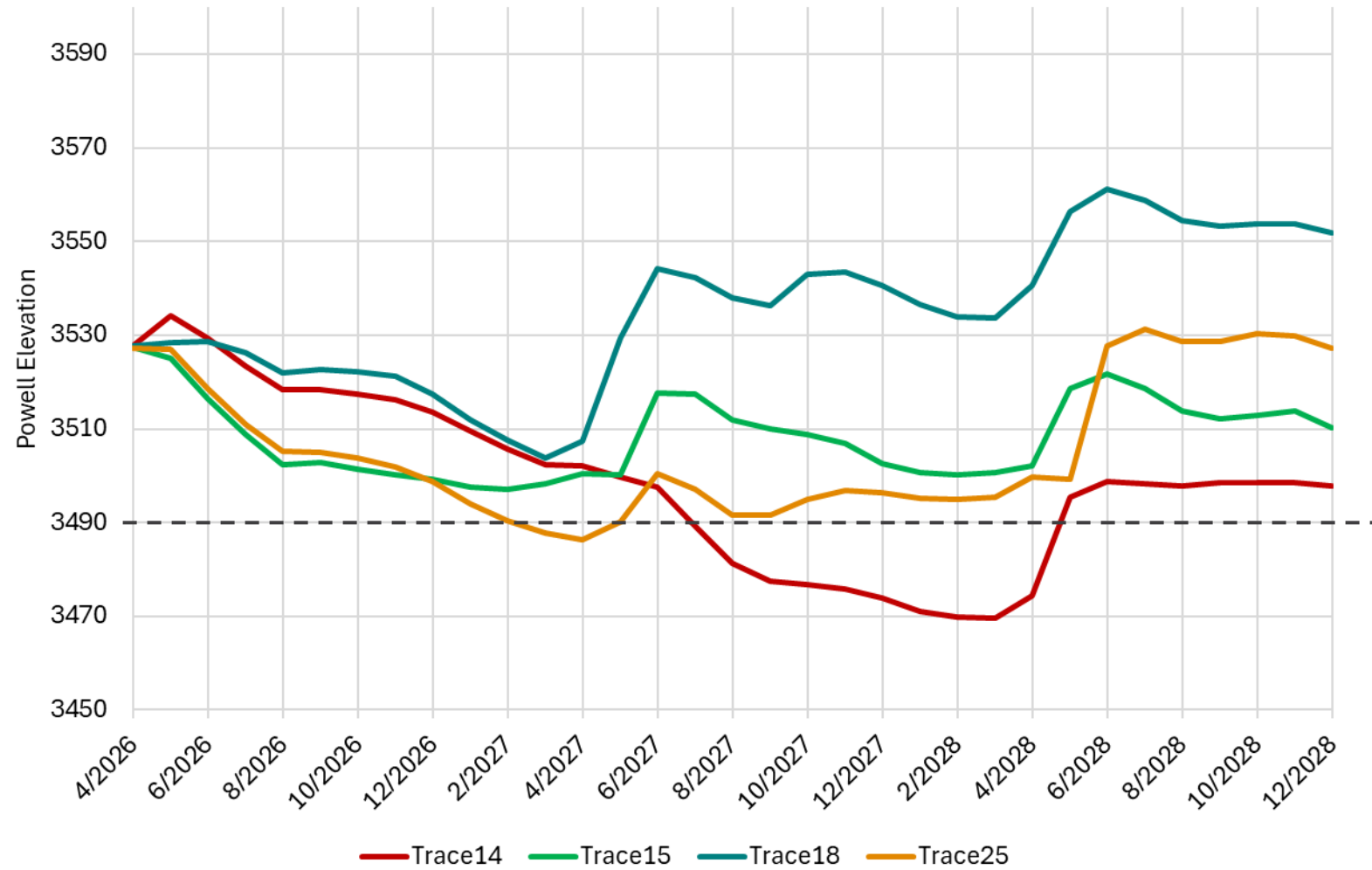
 Downward adjustment to protect 3,500'



ARIZONA
RECONSULTATION
COMMITTEE

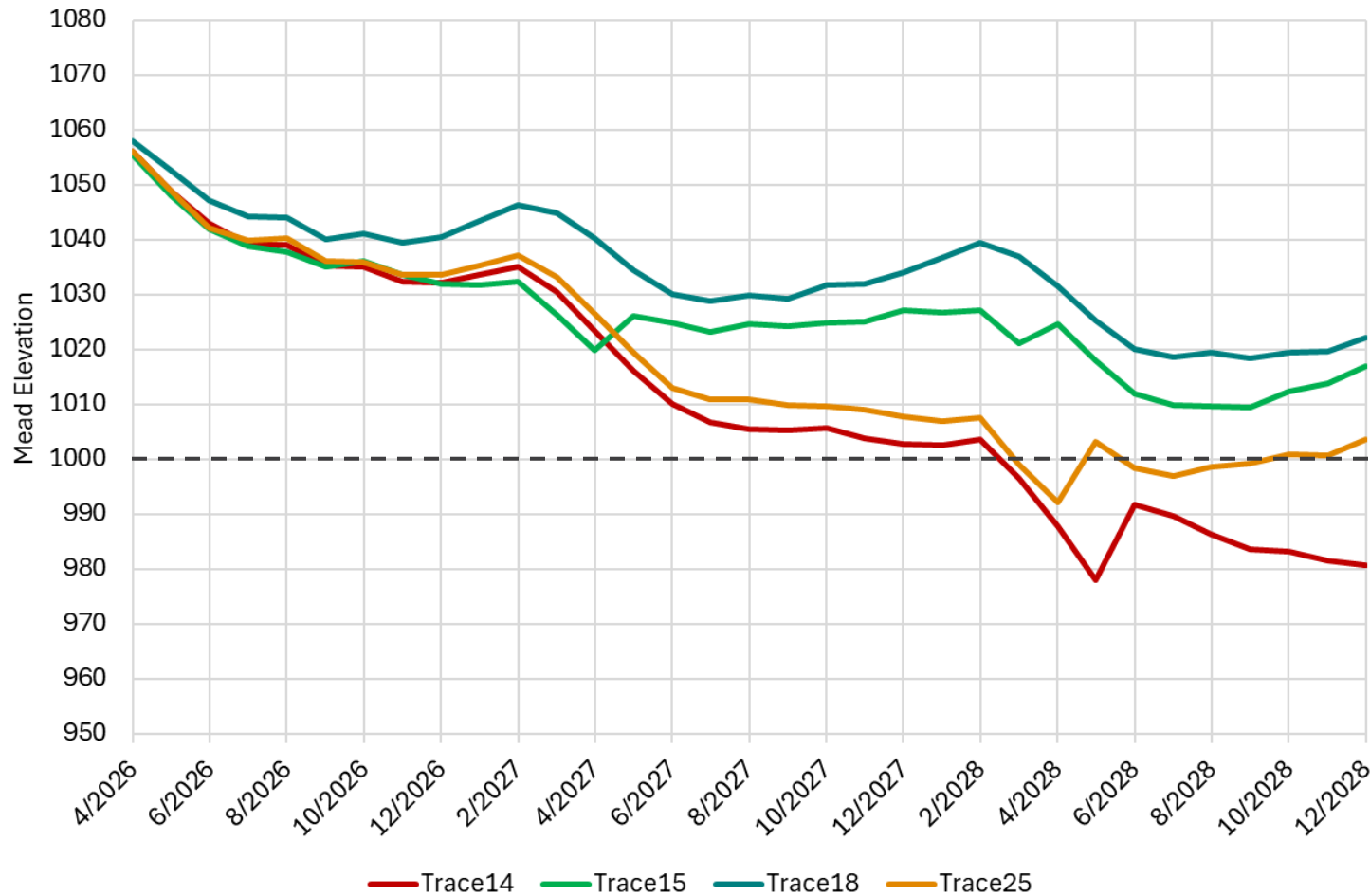
Powell Elevation

WY Release	Trace 14	Trace 25	Trace 15	Trace 18
2026	6	6	6	6
2027	6	6	7	7
2028	6.25	7	7	7



ARIZONA
RECONSULTATION
COMMITTEE

Mead Elevation



WY Release	Trace 14	Trace 25	Trace 15	Trace 18
2026	6	6	6	6
2027	6	6	7	7
2028	6.25	7	7	7

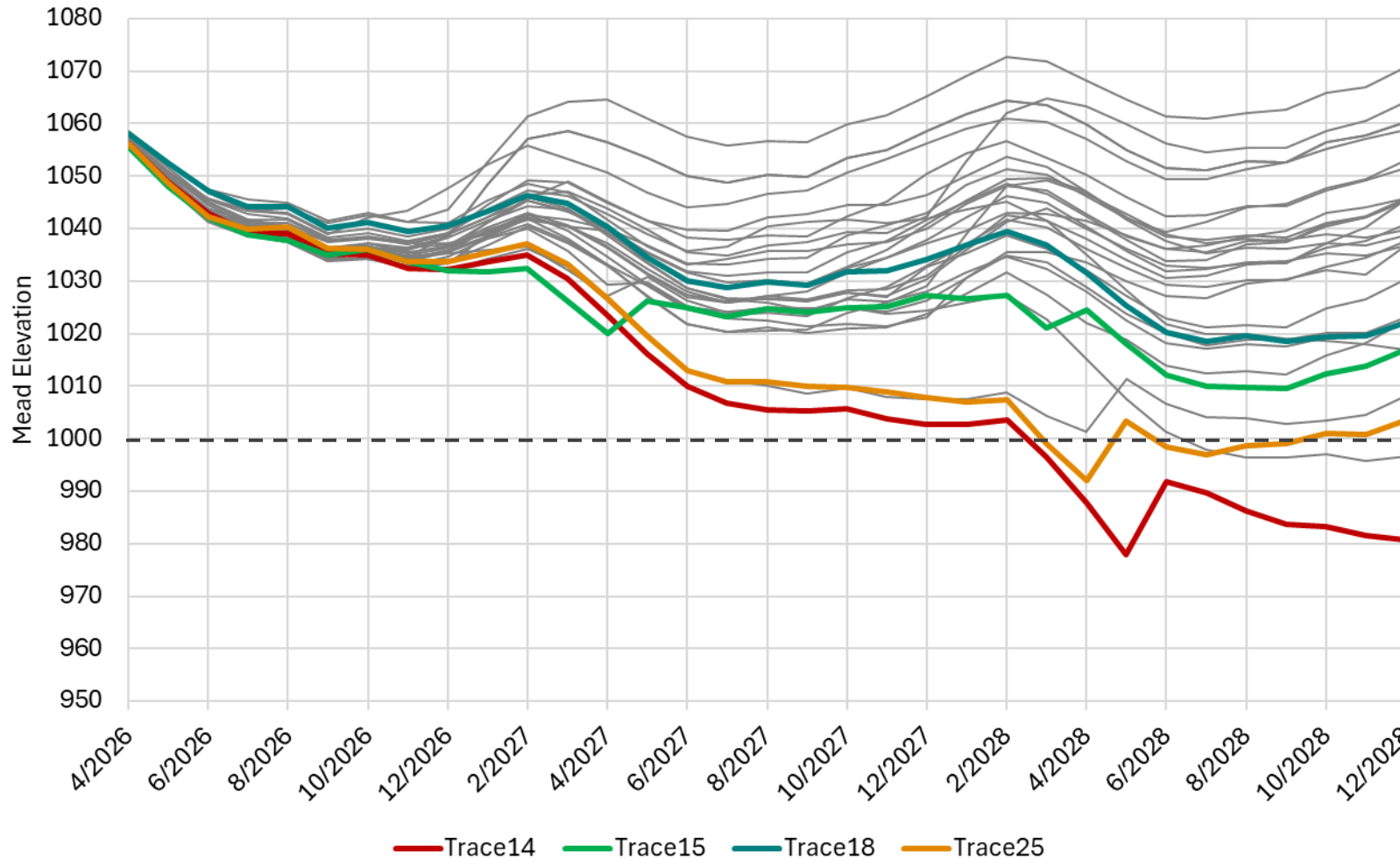
Since 2007, the Lower Basin and Mexico have collectively conserved 8.5 MAF, without which Mead would already be at critical elevations.



ARIZONA
RECONSULTATION
COMMITTEE

Mead Elevation

WY Release	Trace 14	Trace 25	Trace 15	Trace 18
2026	6	6	6	6
2027	6	6	7	7
2028	6.25	7	7	7



EOCY 2028:

26 traces > 1,010'
87% of traces

4 of 30 traces < 1,010'

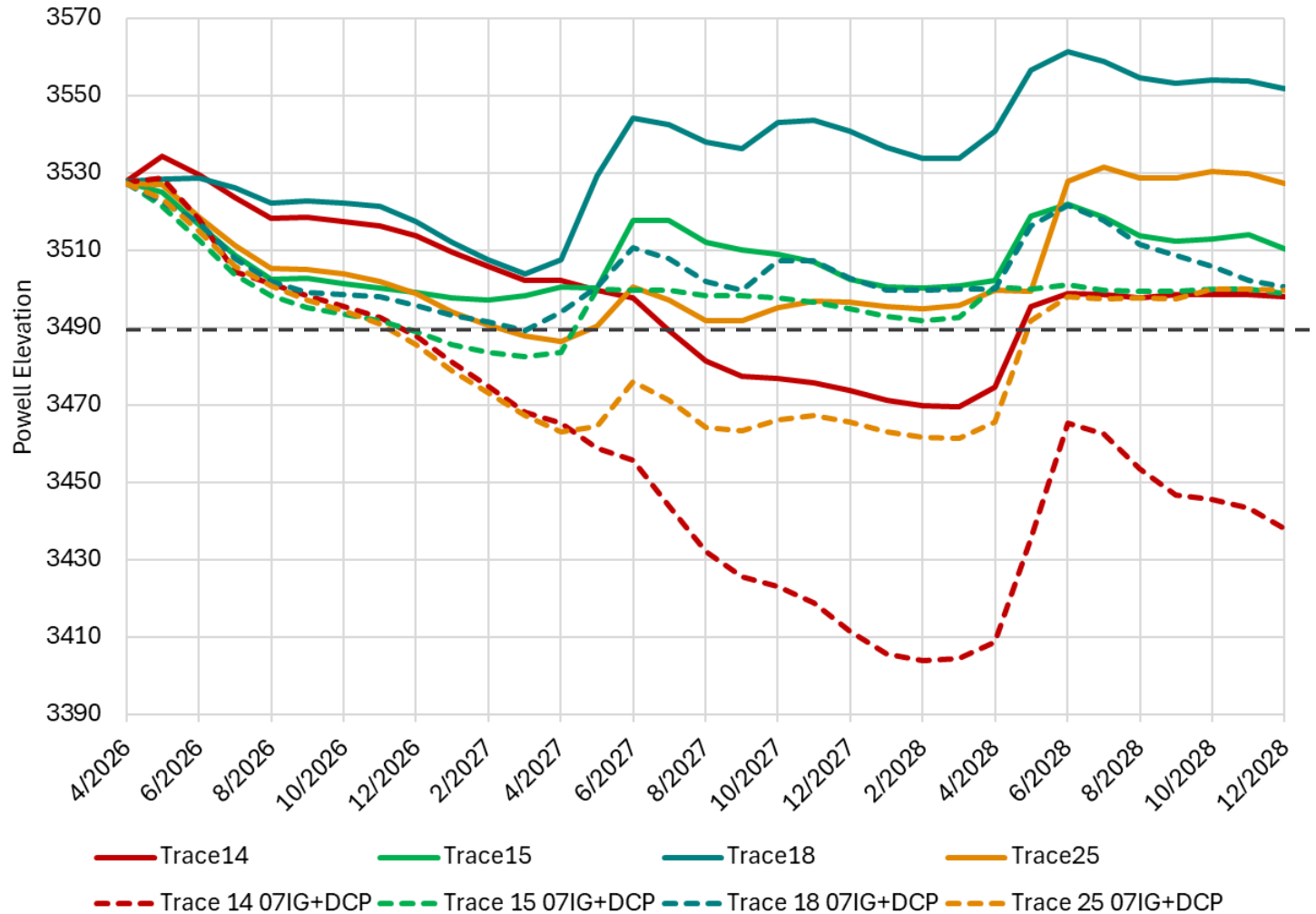
2 of 30 traces < 1,000'



ARIZONA
RECONSULTATION
COMMITTEE

Powell Elevation

Compared to 07IG + DCP



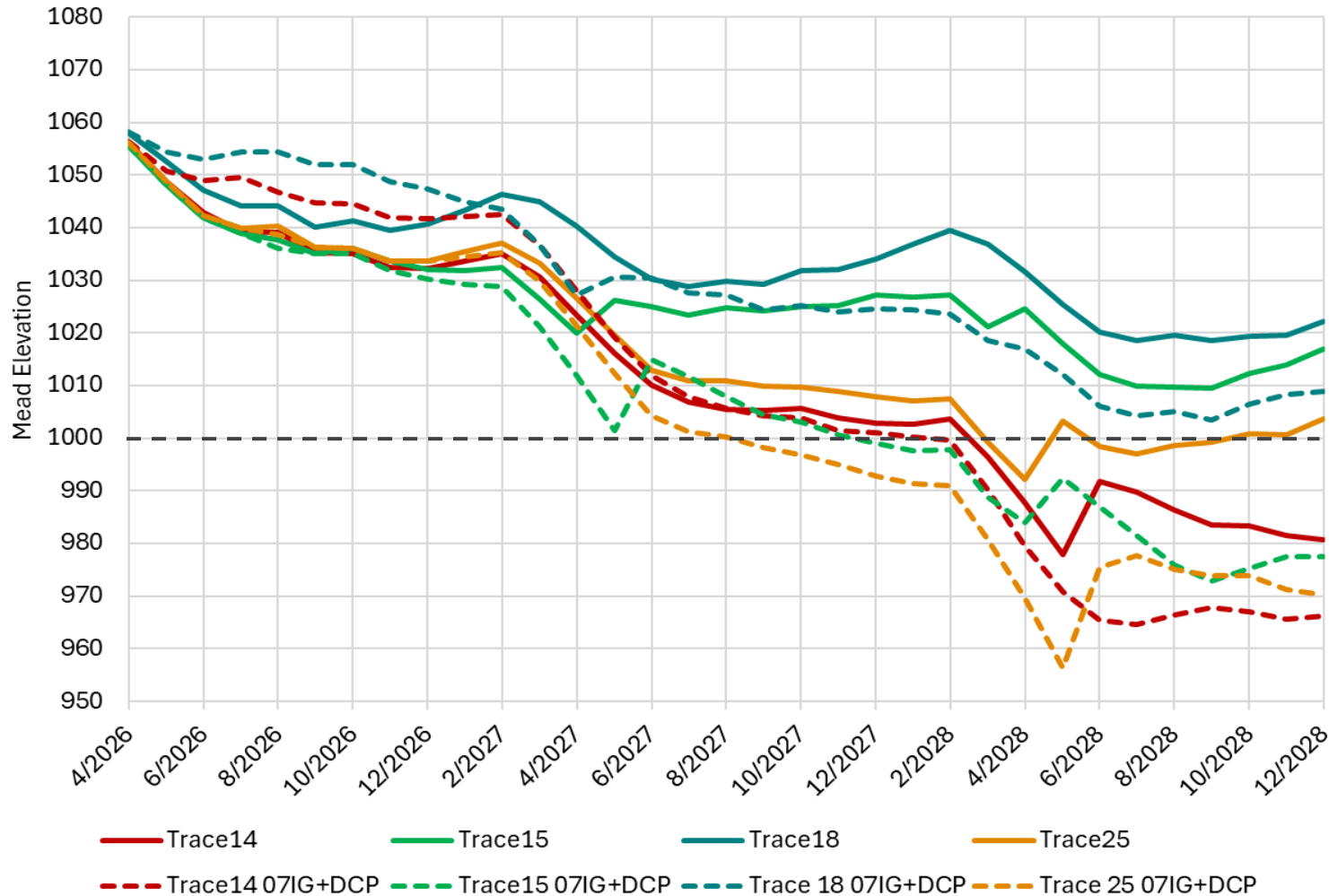
WY Release	Trace 14	Trace 25	Trace 15	Trace 18
2026	6	6	6	6
2027	6	6	7	7
2028	6.25	7	7	7

The Lower Basin Proposal adds ~11 to 60 feet (depending on trace) by EOY 2028



Mead Elevation

Compared to 07IG + DCP



WY Release	Trace 14	Trace 25	Trace 15	Trace 18
2026	6	6	6	6
2027	6	6	7	7
2028	6.25	7	7	7

The Lower Basin Proposal adds ~13 to 40 feet (depending on trace) by EOY 2028



Federal Government's Preliminary Preferred Alternative



Preliminary Preferred Alternative Summary

- Upper and Lower Basin States have not reached consensus on future operating guidelines at this time
- Reclamation is considering a 10-year framework with new operational guidelines every 2 years
 - Implemented under existing law or consensus agreement(s)
- The Guidelines would be subject to sideboards and principles within the range of alternatives analyzed in the forthcoming EIS:
 - Powell- Mead release ranging from 5-12 MAF/Year
 - Lower Basin reductions (US only) – Up to 3 MAF per year
 - Maximum use of UIU release within their respective RODs
 - Powell storage: 3 MAF, Mead storage: 8 MAF



Arizona Conclusions

- In the past 12 years the Lower Basin has saved over 8.5 MAF to protect Lakes Mead and Powell
- The Lower Division States' Proposal:
 - Continues the creative, active collaboration among Arizona, California, and Nevada toward protecting the Colorado River System
 - Defines operations for the next two years
 - Meets the Purpose and Need of the proposed action
- Collective actions of the Lower Division States provide robust protection against deeper cuts but do not guarantee that additional actions won't be necessary



Discussion/Questions





For continued information
and updates, visit
azwater.gov/ARC or
cap-az.com/ARC



**ARIZONA
RECONSULTATION
COMMITTEE**